

ProteCol™ Capillary LC Columns

Environmental Samples- Analysis of Polyaromatic Hydrocarbons (PAH)

Environmental assays typically require maximum sensitivity and involve very low sample concentrations, which makes them ideal for investigation with small diameter HPLC columns. Figure 1 shows the analysis of 16 polyaromatic hydrocarbons by a LC-UV technique using a

ProteCol C18 120 Å 3µm capillary column, 150mm x 300µm ID. While UV detectors are still popular for environmental pollutants, other detectors such as fluorescence, electrochemical and mass spectrometry are also used due to their selectivity and high sensitivity.

ProteCol part numbers used:

Column P/N 2102352
Tubing P/N 212012
Unions/ferrule P/N 212006

Other ProteCol accessories:

MicroFlow Meter P/N 222013

ProteCol™ APPLICATION NOTE

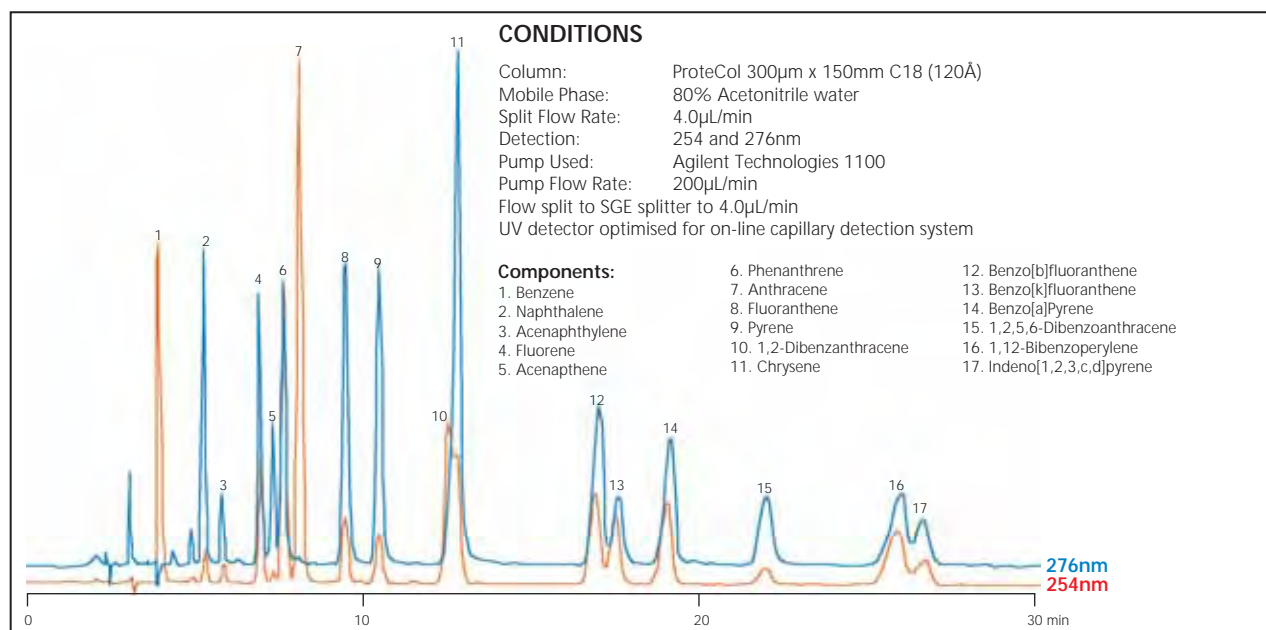


Figure 1 - Separation of PAHs (EPA 610 mix) under isocratic conditions.

For a full listing of all ProteCol products, specifications and part numbers, please see the ProteCol Ordering Information data sheet.

To talk with a technical expert, email support@sge.com.

SGE International Pty. Ltd.
Toll Free: 1800 800 167
Tel: +61 (0) 3 9837 4200
Fax: +61 (0) 3 9874 5672
email: support@sge.com

SGE Europe Ltd. (UK)
Tel: +44 (0) 1908 568 844
Fax: +44 (0) 1908 566 790
email: uk@sge.com

SGE Europe Ltd. (France)
Tel: +33 (0) 1 6929 8090
Fax: +33 (0) 1 6929 0925
email: france@sge.com

SGE Incorporated (USA)
Toll Free: 800 945 6154
Tel: +1 512 837 7190
Fax: +1 512 836 9159
email: usa@sge.com

SGE Deutschland GmbH
Tel: +49 (0) 6151 860486
Fax: +49 (0) 6151 860489
email: germany@sge.com

SGE (Italia) Srl.
Tel: +39 06 4429 0206
Fax: +39 06 4429 0724
email: sge.italia@tin.it

SGE China Service Centre
Tel: +86 (10) 6588 8666
Fax: +86 (10) 6588 6577

SGE Japan Inc.
Tel: +81 (45) 222 2885
Fax: +81 (45) 222 2887
email: japan@sge.com

SGE India
Tel: +91 (022) 471 5896
Fax: +91 (022) 471 6592
email: sgeindia@vsnl.com

Patent Pending



www.sge.com