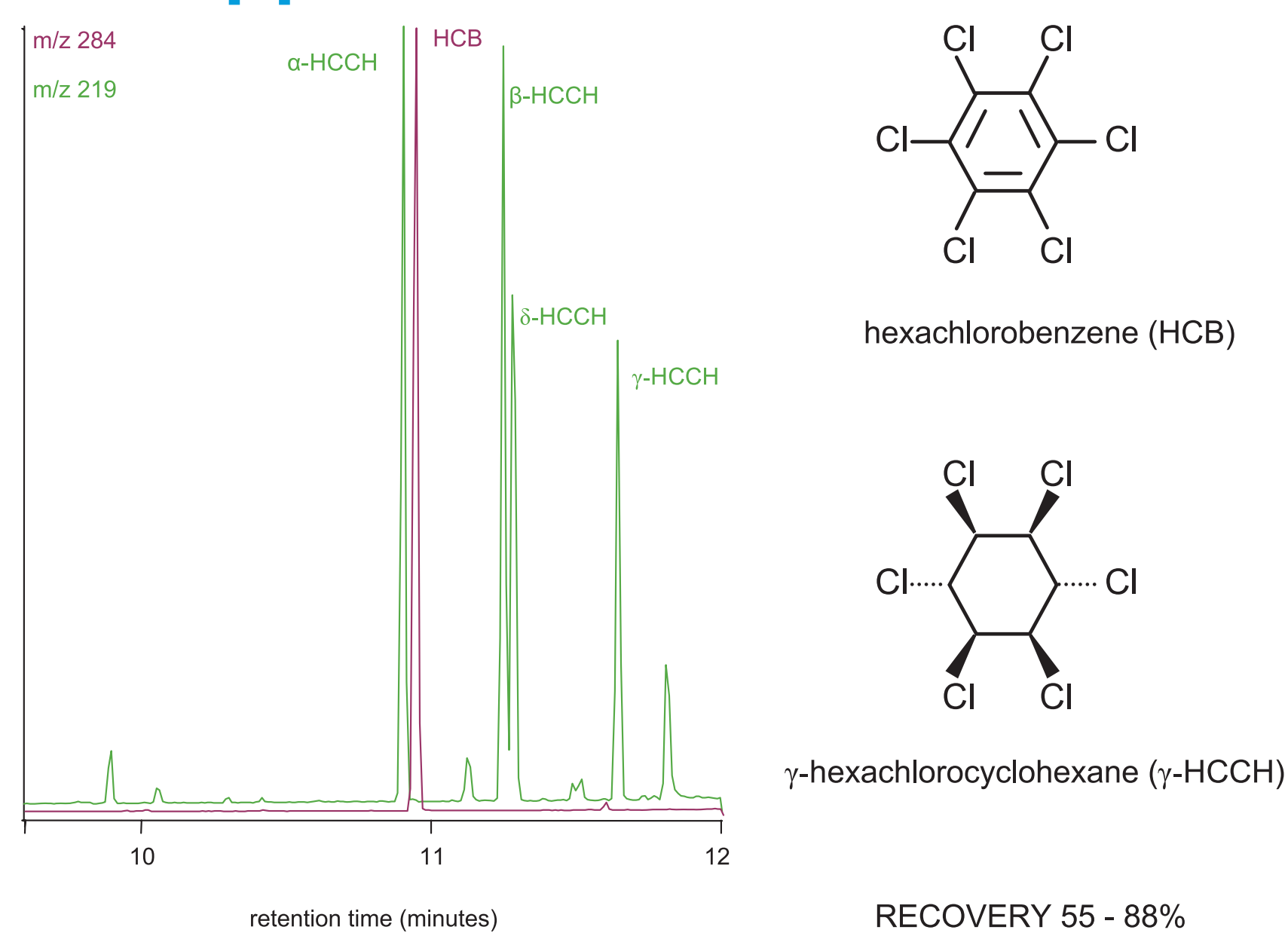


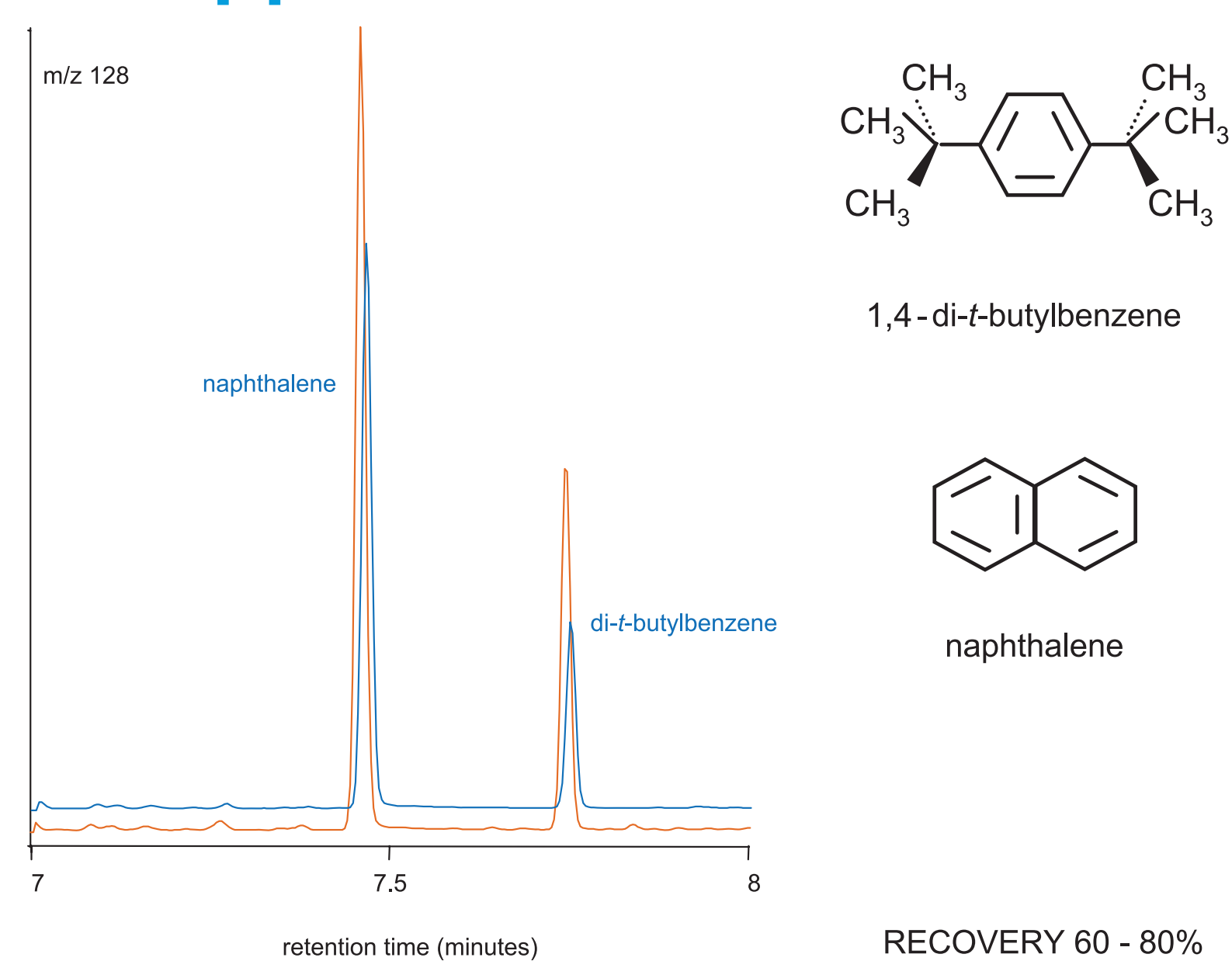
MEPS FOR POLLUTANTS AND SMALL VOLUME SAMPLES

Paul Wynne
SGE Analytical Science, 7 Argent Place, Ringwood VIC 3134 AUSTRALIA

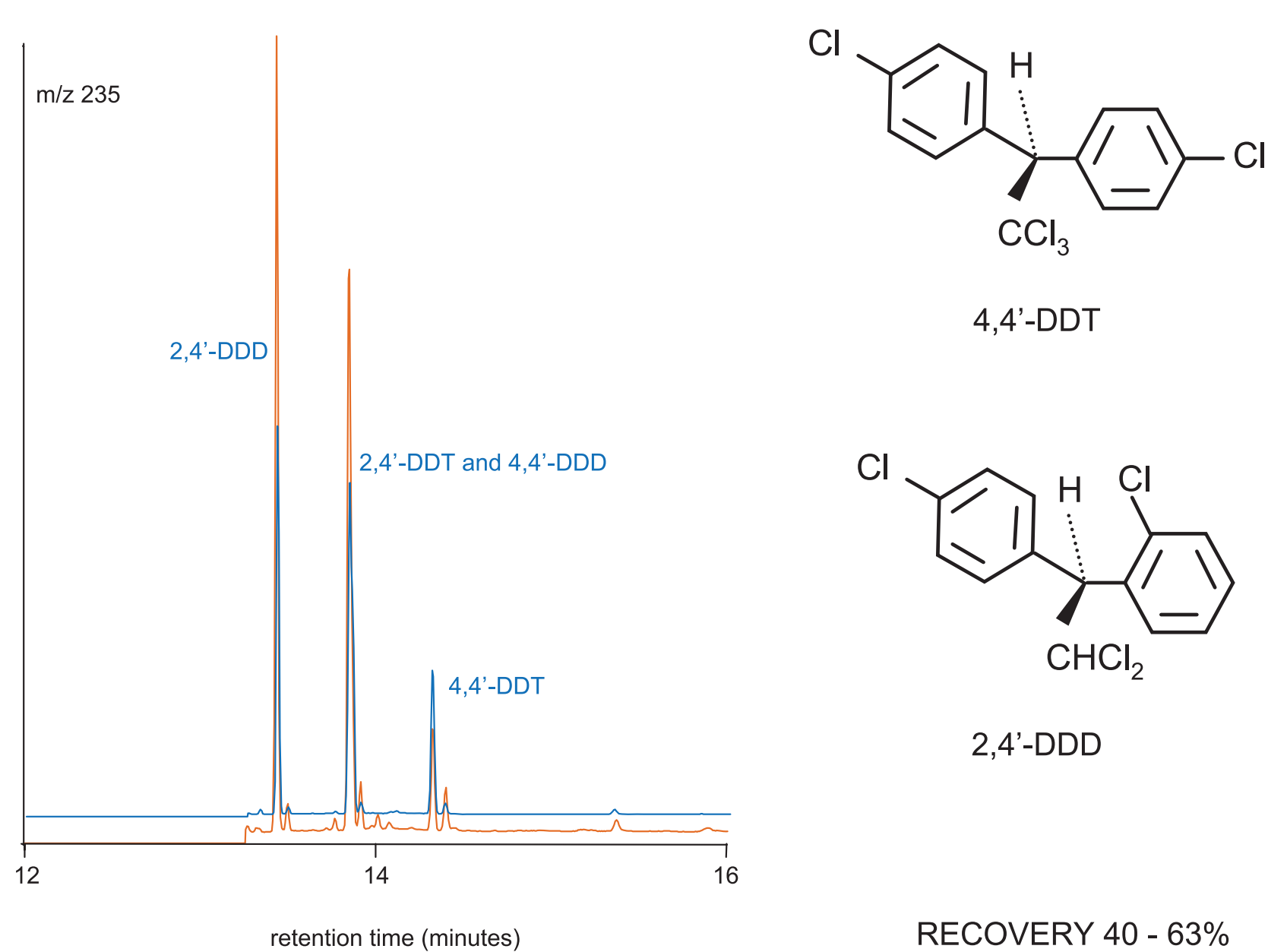
HCCH and HCB 5 ppb



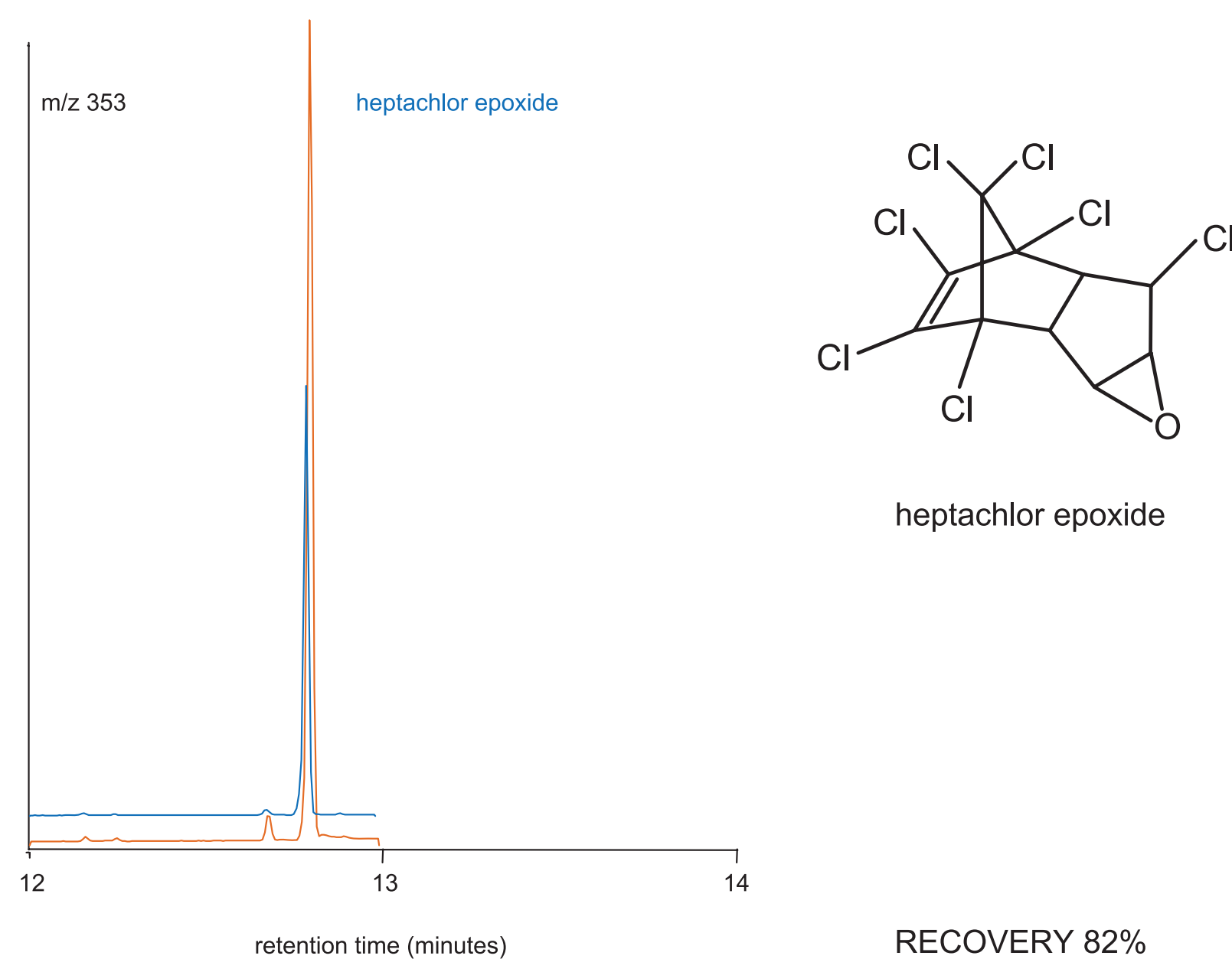
NAPHTHALENE 5 ppb



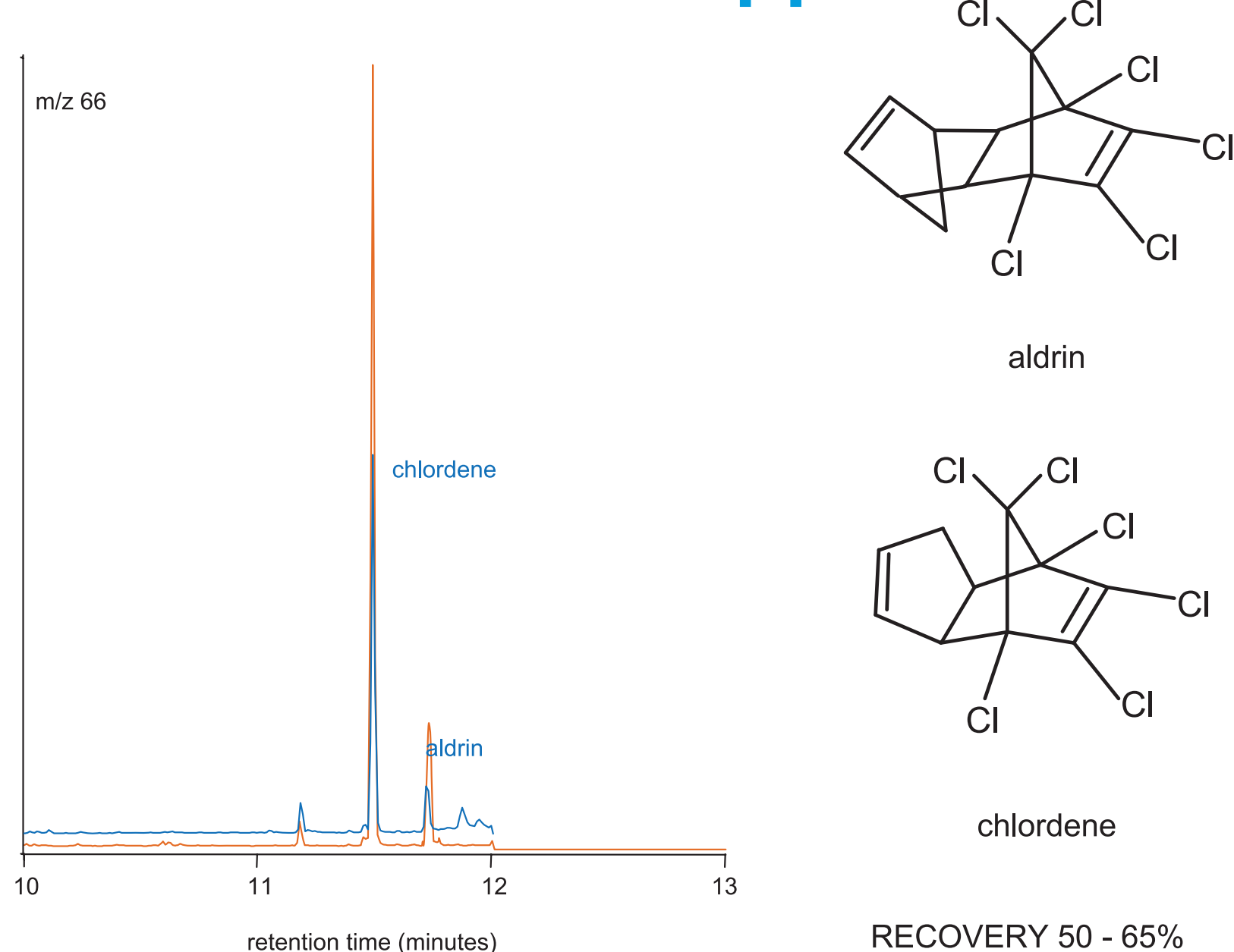
DDT and related compounds 1 ppb



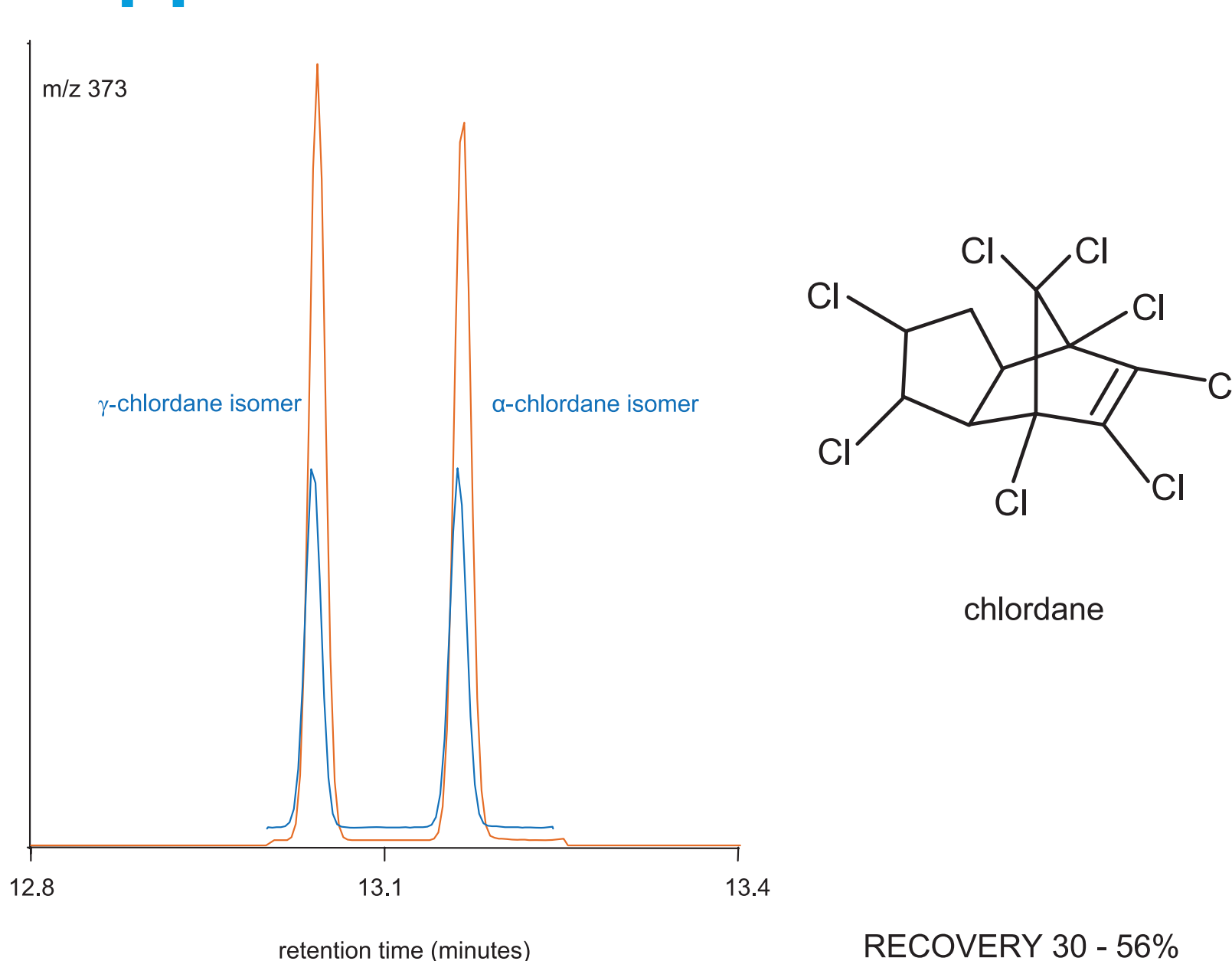
HEPTACHLOR EPOXIDE 10 ppb



CHLORDENE and ALDRIN 1-10 ppb



CHLORDANE 5 ppb



EXPERIMENTAL CONDITIONS

- MEPS extraction was performed by diluting 100 µL of a 10-100 ppb standard with 900 µL of water.
- The whole sample was extracted on a C18 MEPS cartridge conditioned with methanol and water.
- The sorbent was dried and eluted sequentially with 10 µL of isopropanol and 10 µL of dichloromethane into the same vial.
- A 1 µL portion of the eluate was separated on a BPX5 30 m x 0.25 mm i.d. with a 0.25 µm film thickness (SGE Analytical Science) in a 6890 GC-5973N MSD (Agilent Technologies) fitted with an ETP 14642 electron multiplier.
- Injection was splitless at a temperature of 250 °C.
- The carrier gas was helium with a nominal flowrate of 1.3 mL/min in constant flowrate mode and a nominal inlet pressure of 10.8 psi.

- The oven temperature was programmed from 50 °C (held for 2 minutes) to 270 °C (held for 15 minutes) at 20 °C/min.
- The transfer line was at 280 °C.
- MS experiments were in selected ion monitoring mode with an ion dwell time of 200 msec.
- For online use, the 20 µL combined isopropanol-dichloromethane eluate should be injected using a large volume injector.
- The MEPS cartridge was recycled in excess of 20 times by washing with dichloromethane (2 x 20 µL) and methanol (2 x 20 µL).
- Recovery may be improved by modifying the sample with surface active agents and increasing the ionic strength of the aqueous sample.
- Pure standards shown in orange. Extracted samples shown in blue.

For more chromatographic information visit www.sge.com or contact your SGE technical specialist.



AUSTRALIA & PACIFIC REGION
SGE Analytical Science Pty Ltd
Toll Free: 1800 800 167
Tel: +61 (0) 3 9837 4200
Fax: +61 (0) 3 9874 5672
Email: support@sge.com

CHINA
SGE Shanghai
Representative Office
Tel: +86 21 6407 9382
Fax: +86 21 6407 9386
Email: china@sge.com

FRANCE
SGE Europe Ltd
Tel: +33 1 69 29 80 90
Fax: +33 1 69 29 09 25
Email: europe@sge.com

GERMANY
SGE GmbH
Tel: +49 (0) 6155 / 60746 0
Fax: +49 (0) 6155 / 60746 50
Email: europe@sge.com

INDIA
SGE Laboratory
Accessories Pvt Ltd
Tel: +91 22 24715896
Fax: +91 22 24716592
Email: sgeindia@vsnl.com

JAPAN
SGE Japan Inc
Tel: +81 45 222 2885
Fax: +81 45 222 2887
Email: japan@sge.com

MIDDLE EAST
SGE Gulf
Tel: 00 971 6 557 3341
Fax: 00 971 6 557 3541
Email: gulfsupport@sge.com

UNITED KINGDOM
SGE Europe Ltd
Tel: +44 1908 568 844
Fax: +44 1908 566 790
Email: europe@sge.com

UNITED STATES OF AMERICA
SGE Incorporated
Toll Free: (800) 945 6154
Tel: +1 512 837 7190
Fax: +1 512 836 9159
Email: usa@sge.com