

ACTIVE FILM Multiplier™

for the HP/Agilent Technologies 5970 MSD



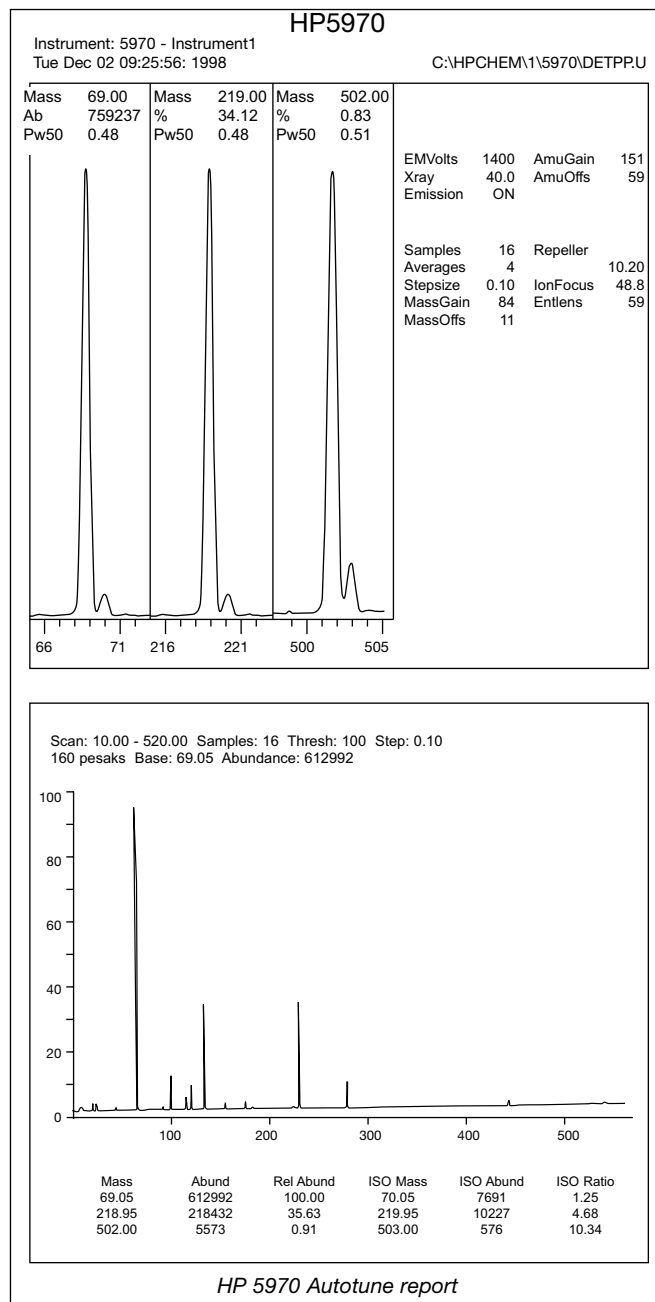
PRODUCT DATA

All ETP ACTIVE FILM Multipliers™ from SGE have been developed to exhibit:

- Unsurpassed Sensitivity
- Unrivalled Linearity and Dynamic Range
- Unequaled Operational Lifetime
- Uncompromised Ease of Installation.

The model 14511 detector from SGE has been specifically designed to retrofit the HP/Agilent Technologies 5970 MSD GC-MS system. The 14511 is completely self contained and plug-compatible with the original equipment. No special mounting assemblies or other hardware is required.

Incorporating sophisticated state of the art ion optics and unique discrete-dynode construction, the 14511 is *guaranteed to meet or exceed all instrument specifications*. Typical autotune results are shown in the box adjacent.



ACTIVE FILM Multiplier™

for the HP/Agilent Technologies 5970 MSD

Installation or replacement of the 14511 takes only about 20 minutes once the mass spectrometer is cooled and vented to atmosphere. Refer to the photograph at right or to your instrument documentation for assistance.

1. Cool and vent the mass spectrometer according to instructions provided with the instrument.
2. Follow instructions in the instrument documentation for removal of the analyzer assembly and place the assembly on a clean work surface.
3. Remove the four housing baseplate screws (two on each side) and remove the analyzer housing. This will expose the electron multiplier as shown in the photo.
4. Remove the two screws securing the multiplier to the mounting flange.
5. Loosen the set screws in each of the three barrel connectors attached to the multiplier contact pins and remove the multiplier by grasping the ceramic side supports.
6. Install the new multiplier by inserting the contact pins in the appropriate barrel connector (there is only one possible orientation). Tighten the set screws.
7. Replace and tighten the multiplier mounting screws.
8. Replace the analyzer housing and ensure that the seven metallized tracks of the housing surface align with the seven spring clips on the base.
9. Reinstall the analyzer housing in the instrument and begin the pump down procedure.



Ordering Information

Part No.	Description
14511	5970 MSD multiplier