

**APPENDIX A TO PART 136**  
**METHODS FOR ORGANIC CHEMICAL ANALYSIS OF MUNICIPAL AND**  
**INDUSTRIAL WASTEWATER**

**METHOD 607—NITROSAMINES**

**1. Scope and Application**

1.1 This method covers the determination of certain nitrosamines. The following parameters can be determined by this method:

Parameter	Storet No.	CAS No.
N-Nitrosodimethylamine . . . . .	34438	62-75-9
N-Nitrosodiphenylamine . . . . .	34433	86-30-6
N-Nitrosodi-n-propylamine . . . . .	34428	621-64-7

1.2 This is a gas chromatographic (GC) method applicable to the determination of the parameters listed above in municipal and industrial discharges as provided under 40 CFR 136.1. When this method is used to analyze unfamiliar samples for any or all of the compounds above, compound identifications should be supported by at least one additional qualitative technique. This method describes analytical conditions for a second gas chromatographic column that can be used to confirm measurements made with the primary column. Method 625 provides gas chromatograph/mass spectrometer (GC/MS) conditions appropriate for the qualitative and quantitative confirmation of results for N-nitrosodi-n-propylamine. In order to confirm the presence of N-nitrosodiphenylamine, the cleanup procedure specified in Section 11.3 or 11.4 must be used. In order to confirm the presence of N-nitrosodimethylamine by GC/MS, Column 1 of this method must be substituted for the column recommended in Method 625. Confirmation of these parameters using GC-high resolution mass spectrometry or a Thermal Energy Analyzer is also recommended.<sup>1,2</sup>

1.3 The method detection limit (MDL, defined in Section 14.1)<sup>3</sup> for each parameter is listed in Table 1. The MDL for a specific wastewater may differ from those listed, depending upon the nature of interferences in the sample matrix.

1.4 Any modification of this method, beyond those expressly permitted, shall be considered as a major modification subject to application and approval of alternate test procedures under 40 CFR Parts 136.4 and 136.5.

1.5 This method is restricted to use by or under the supervision of analysts experienced in the use of a gas chromatograph and in the interpretation of gas chromatograms. Each analyst must demonstrate the ability to generate acceptable results with this method using the procedure described in Section 8.2.

## **2. Summary of Method**

- 2.1 A measured volume of sample, approximately 1 L, is extracted with methylene chloride using a separatory funnel. The methylene chloride extract is washed with dilute hydrochloric acid to remove free amines, dried, and concentrated to a volume of 10 mL or less. After the extract has been exchanged to methanol, it is separated by gas chromatography and the parameters are then measured with a nitrogen-phosphorus detector.<sup>4</sup>
- 2.2 The method provides Florisil and alumina column cleanup procedures to separate diphenylamine from the nitrosamines and to aid in the elimination of interferences that may be encountered.

## **3. Interferences**

- 3.1 Method interferences may be caused by contaminants in solvents, reagents, glassware, and other sample processing hardware that lead to discrete artifacts and/or elevated baselines in gas chromatograms. All of these materials must be routinely demonstrated to be free from interferences under the conditions of the analysis by running laboratory reagent blanks as described in Section 8.1.3.
- 3.1.1 Glassware must be scrupulously cleaned.<sup>5</sup> Clean all glassware as soon as possible after use by rinsing with the last solvent used in it. Solvent rinsing should be followed by detergent washing with hot water, and rinses with tap water and distilled water. The glassware should then be drained dry, and heated in a muffle furnace at 400°C for 15-30 minutes. Solvent rinses with acetone and pesticide quality hexane may be substituted for the muffle furnace heating. Volumetric ware should not be heated in a muffle furnace. After drying and cooling, glassware should be sealed and stored in a clean environment to prevent any accumulation of dust or other contaminants. Store inverted or capped with aluminum foil.
- 3.1.2 The use of high purity reagents and solvents helps to minimize interference problems. Purification of solvents by distillation in all-glass systems may be required.
- 3.2 Matrix interferences may be caused by contaminants that are co-extracted from the sample. The extent of matrix interferences will vary considerably from source to source, depending upon the nature and diversity of the industrial complex or municipality being sampled. The cleanup procedures in Section 11 can be used to overcome many of these interferences, but unique samples may require additional cleanup approaches to achieve the MDL listed in Table 1.
- 3.3 N-Nitrosodiphenylamine is reported<sup>6-9</sup> to undergo transnitrosation reactions. Care must be exercised in the heating or concentrating of solutions containing this compound in the presence of reactive amines.

3.4 The sensitive and selective Thermal Energy Analyzer and the reductive Hall detector may be used in place of the nitrogen-phosphorus detector when interferences are encountered. The Thermal Energy Analyzer offers the highest selectivity of the non-MS detectors.

#### **4. Safety**

4.1 The toxicity or carcinogenicity of each reagent used in this method has not been precisely defined; however, each chemical compound should be treated as a potential health hazard. From this viewpoint, exposure to these chemicals must be reduced to the lowest possible level by whatever means available. The laboratory is responsible for maintaining a current awareness file of OSHA regulations regarding the safe handling of the chemicals specified in this method. A reference file of material data handling sheets should also be made available to all personnel involved in the chemical analysis. Additional references to laboratory safety are available and have been identified<sup>10-12</sup> for the information of the analyst.

4.2 These nitrosamines are known carcinogens<sup>13-17</sup>, therefore, utmost care must be exercised in the handling of these materials. Nitrosamine reference standards and standard solutions should be handled and prepared in a ventilated glove box within a properly ventilated room.

#### **5. Apparatus and Materials**

5.1 Sampling equipment, for discrete or composite sampling.

5.1.1 Grab sample bottle— 1-L or 1-qt, amber glass, fitted with a screw cap lined with Teflon. Foil may be substituted for Teflon if the sample is not corrosive. If amber bottles are not available, protect samples from light. The bottle and cap liner must be washed, rinsed with acetone or methylene chloride, and dried before use to minimize contamination.

5.1.2 Automatic sampler (optional)—The sampler must incorporate glass sample containers for the collection of a minimum of 250 mL of sample. Sample containers must be kept refrigerated at 4°C and protected from light during compositing. If the sampler uses a peristaltic pump, a minimum length of compressible silicone rubber tubing may be used. Before use, however, the compressible tubing should be thoroughly rinsed with methanol, followed by repeated rinsings with distilled water to minimize the potential for contamination of the sample. An integrating flowmeter is required to collect flow proportional composites.

5.2 Glassware (All specifications are suggested. Catalog numbers are included for illustration only.)

5.2.1 Separatory funnels— 2-L and 250-mL, with Teflon stopcock.

5.2.2 Drying column—Chromatographic column, approximately 400 mm long x 19 mm ID, with coarse frit filter disc.

- 5.2.3 Concentrator tube, Kuderna-Danish— 10-mL, graduated (Kontes K-570050-1025 or equivalent). Calibration must be checked at the volumes employed in the test. Ground glass stopper is used to prevent evaporation of extracts.
- 5.2.4 Evaporative flask, Kuderna-Danish— 500-mL (Kontes K-570001-0500 or equivalent). Attach to concentrator tube with springs.
- 5.2.5 Snyder column, Kuderna-Danish—Three-ball macro (Kontes K-503000-0121 or equivalent).
- 5.2.6 Snyder column, Kuderna-Danish—Two-ball micro (Kontes K-569001-0219 or equivalent).
- 5.2.7 Vials—10 to 15-mL, amber glass, with Teflon-lined screw cap.
- 5.2.8 Chromatographic column—Approximately 400 mm long x 22 mm ID, with Teflon stopcock and coarse frit filter disc at bottom (Kontes K-420540-0234 or equivalent), for use in Florisil column cleanup procedure.
- 5.2.9 Chromatographic column—Approximately 300 mm long x 10 mm ID, with Teflon stopcock and coarse frit filter disc at bottom (Kontes K-420540-0213 or equivalent), for use in alumina column cleanup procedure.
- 5.3 Boiling chips—Approximately 10/40 mesh. Heat to 400°C for 30 minutes or Soxhlet extract with methylene chloride.
- 5.4 Water bath—Heated, with concentric ring cover, capable of temperature control ( $\pm 2^\circ\text{C}$ ). The bath should be used in a hood.
- 5.5 Balance—Analytical, capable of accurately weighing 0.0001 g.
- 5.6 Gas chromatograph—An analytical system complete with gas chromatograph suitable for on-column injection and all required accessories including syringes, analytical columns, gases, detector, and strip-chart recorder. A data system is recommended for measuring peak areas.
  - 5.6.1 Column 1—1.8 m long x 4 mm ID glass, packed with 10% Carbowax 20 M/2% KOH on Chromosorb W-AW (80/100 mesh) or equivalent. This column was used to develop the method performance statements in Section 14. Guidelines for the use of alternate column packings are provided in Section 12.2.
  - 5.6.2 Column 2—1.8 m long x 4 mm ID glass, packed with 10% SP-2250 on Supelcoport (100/120 mesh) or equivalent.
  - 5.6.3 Detector—Nitrogen-phosphorus, reductive Hall, or Thermal Energy Analyzer detector.<sup>1,2</sup> These detectors have proven effective in the analysis of wastewaters for the parameters listed in the scope (Section 1.1). A nitrogen-phosphorus detector was used to develop the method performance statements in Section 14. Guidelines for the use of alternate detectors are provided in Section 12.2.

## 6. Reagents

- 6.1 Reagent water—Reagent water is defined as a water in which an interferent is not observed at the MDL of the parameters of interest.
- 6.2 Sodium hydroxide solution (10 N)—Dissolve 40 g of NaOH (ACS) in reagent water and dilute to 100 mL.
- 6.3 Sodium thiosulfate—(ACS) Granular.
- 6.4 Sulfuric acid (1+1)—Slowly, add 50 mL of H<sub>2</sub>SO<sub>4</sub> (ACS, sp. gr. 1.84) to 50 mL of reagent water.
- 6.5 Sodium sulfate—(ACS) Granular, anhydrous. Purify by heating at 400°C for four hours in a shallow tray.
- 6.6 Hydrochloric acid (1+9)—Add one volume of concentrated HCl (ACS) to nine volumes of reagent water.
- 6.7 Acetone, methanol, methylene chloride, pentane—Pesticide quality or equivalent.
- 6.8 Ethyl ether—Nanograde, redistilled in glass if necessary.
- 6.8.1 Ethyl ether must be shown to be free of peroxides before it is used as indicated by EM Laboratories Quant test strips. (Available from Scientific Products Co., Cat No. P1126-8, and other suppliers.)
- 6.8.2 Procedures recommended for removal of peroxides are provided with the test strips. After cleanup, 20 mL of ethyl alcohol preservative must be added to each liter of ether.
- 6.9 Florisil—PR grade (60/100 mesh). Purchase activated at 1250°F and store in the dark in glass containers with ground glass stoppers or foil-lined screw caps. Before use, activate each batch at least 16 hours at 130°C in a foil-covered glass container and allow to cool.
- 6.10 Alumina—Basic activity Super I, W200 series (ICN Life Sciences Group, No. 404571, or equivalent). To prepare for use, place 100 g of alumina into a 500 mL reagent bottle and add 2 mL of reagent water. Mix the alumina preparation thoroughly by shaking or rolling for 10 minutes and let it stand for at least two hours. The preparation should be homogeneous before use. Keep the bottle sealed tightly to ensure proper activity.
- 6.11 Stock standard solutions (1.00 µg/µL)—Stock standard solutions can be prepared from pure standard materials or purchased as certified solutions.
- 6.11.1 Prepare stock standard solutions by accurately weighing about 0.0100 g of pure material. Dissolve the material in methanol and dilute to volume in a 10 mL volumetric flask. Larger volumes can be used at the convenience of the analyst. When compound purity is assayed to be 96% or greater, the weight

can be used without correction to calculate the concentration of the stock standard. Commercially prepared stock standards can be used at any concentration if they are certified by the manufacturer or by an independent source.

6.11.2 Transfer the stock standard solutions into Teflon-sealed screw-cap bottles. Store at 4°C and protect from light. Stock standard solutions should be checked frequently for signs of degradation or evaporation, especially just prior to preparing calibration standards from them.

6.11.3 Stock standard solutions must be replaced after six months, or sooner if comparison with check standards indicates a problem.

6.12 Quality control check sample concentrate—See Section 8.2.1.

## 7. Calibration

7.1 Establish gas chromatographic operating conditions equivalent to those given in Table 1. The gas chromatographic system can be calibrated using the external standard technique (Section 7.2) or the internal standard technique (Section 7.3).

### 7.2 External standard calibration procedure

7.2.1 Prepare calibration standards at a minimum of three concentration levels for each parameter of interest by adding volumes of one or more stock standards to a volumetric flask and diluting to volume with methanol. One of the external standards should be at a concentration near, but above, the MDL (Table 1) and the other concentrations should correspond to the expected range of concentrations found in real samples or should define the working range of the detector.

7.2.2 Using injections of 2-5  $\mu\text{L}$ , analyze each calibration standard according to Section 12 and tabulate peak height or area responses against the mass injected. The results can be used to prepare a calibration curve for each compound. Alternatively, if the ratio of response to amount injected (calibration factor) is a constant over the working range (<10% relative standard deviation, RSD), linearity through the origin can be assumed and the average ratio or calibration factor can be used in place of a calibration curve.

7.3 Internal standard calibration procedure—To use this approach, the analyst must select one or more internal standards that are similar in analytical behavior to the compounds of interest. The analyst must further demonstrate that the measurement of the internal standard is not affected by method or matrix interferences. Because of these limitations, no internal standard can be suggested that is applicable to all samples.

7.3.1 Prepare calibration standards at a minimum of three concentration levels for each parameter of interest by adding volumes of one or more stock standards to a volumetric flask. To each calibration standard, add a known constant amount of one or more internal standards, and dilute to volume with

methanol. One of the standards should be at a concentration near, but above, the MDL and the other concentrations should correspond to the expected range of concentrations found in real samples or should define the working range of the detector.

- 7.3.2 Using injections of 2-5  $\mu\text{L}$ , analyze each calibration standard according to Section 12 and tabulate peak height or area responses against concentration for each compound and internal standard. Calculate response factors (RF) for each compound using Equation 1.

*Equation 1*

$$\text{RF} = \frac{(A_s)(C_{is})}{(A_{is})(C_s)}$$

where:

$A_s$  = Response for the parameter to be measured.

$A_{is}$  = Response for the internal standard.

$C_{is}$  = Concentration of the internal standard ( $\mu\text{g/L}$ ).

$C_s$  = Concentration of the parameter to be measured ( $\mu\text{g/L}$ ).

If the RF value over the working range is a constant (<10% RSD), the RF can be assumed to be invariant and the average RF can be used for calculations. Alternatively, the results can be used to plot a calibration curve of response ratios,  $A_s/A_{is}$ , vs. concentration ratios  $C_s/C_{is}$ .

- 7.4 The working calibration curve, calibration factor, or RF must be verified on each working day by the measurement of one or more calibration standards. If the response for any parameter varies from the predicted response by more than  $\pm 15\%$ , a new calibration curve must be prepared for that compound.
- 7.5 Before using any cleanup procedure, the analyst must process a series of calibration standards through the procedure to validate elution patterns and the absence of interferences from the reagents.

## 8. Quality Control

- 8.1 Each laboratory that uses this method is required to operate a formal quality control program. The minimum requirements of this program consist of an initial demonstration of laboratory capability and an ongoing analysis of spiked samples to evaluate and document data quality. The laboratory must maintain records to document the quality of data that is generated. Ongoing data quality checks are compared with established performance criteria to determine if the results of analyses meet the performance characteristics of the method. When results of sample spikes

---

\*This equation corrects an error made in the original method publication (49 FR 43234, October 26, 1984). This correction will be formalized through a rulemaking in FY97.

indicate atypical method performance, a quality control check standard must be analyzed to confirm that the measurements were performed in an in-control mode of operation.

- 8.1.1 The analyst must make an initial, one-time, demonstration of the ability to generate acceptable accuracy and precision with this method. This ability is established as described in Section 8.2.
  - 8.1.2 In recognition of advances that are occurring in chromatography, the analyst is permitted certain options (detailed in Sections 10.4, 11.1, and 12.2) to improve the separations or lower the cost of measurements. Each time such a modification is made to the method, the analyst is required to repeat the procedure in Section 8.2.
  - 8.1.3 Before processing any samples, the analyst must analyze a reagent water blank to demonstrate that interferences from the analytical system and glassware are under control. Each time a set of samples is extracted or reagents are changed, a reagent water blank must be processed as a safeguard against laboratory contamination.
  - 8.1.4 The laboratory must, on an ongoing basis, spike and analyze a minimum of 10% of all samples to monitor and evaluate laboratory data quality. This procedure is described in Section 8.3.
  - 8.1.5 The laboratory must, on an ongoing basis, demonstrate through the analyses of quality control check standards that the operation of the measurement system is in control. This procedure is described in Section 8.4. The frequency of the check standard analyses is equivalent to 10% of all samples analyzed but may be reduced if spike recoveries from samples (Section 8.3) meet all specified quality control criteria.
  - 8.1.6 The laboratory must maintain performance records to document the quality of data that is generated. This procedure is described in Section 8.5.
- 8.2 To establish the ability to generate acceptable accuracy and precision, the analyst must perform the following operations.
- 8.2.1 A quality control (QC) check sample concentrate is required containing each parameter of interest at a concentration of 20  $\mu\text{g}/\text{mL}$  in methanol. The QC check sample concentrate must be obtained from the U.S. Environmental Protection Agency, Environmental Monitoring and Support Laboratory in Cincinnati, Ohio, if available. If not available from that source, the QC check sample concentrate must be obtained from another external source. If not available from either source above, the QC check sample concentrate must be prepared by the laboratory using stock standards prepared independently from those used for calibration.
  - 8.2.2 Using a pipet, prepare QC check samples at a concentration of 20  $\mu\text{g}/\text{L}$  by adding 1.00 mL of QC check sample concentrate to each of four 1 L aliquots of reagent water.



- 8.2.3 Analyze the well-mixed QC check samples according to the method beginning in Section 10.
- 8.2.4 Calculate the average recovery ( $\bar{X}$ ) in  $\mu\text{g/L}$ , and the standard deviation of the recovery (s) in  $\mu\text{g/L}$ , for each parameter using the four results.
- 8.2.5 For each parameter compare s and  $\bar{X}$  with the corresponding acceptance criteria for precision and accuracy, respectively, found in Table 2. If s and  $\bar{X}$  for all parameters of interest meet the acceptance criteria, the system performance is acceptable and analysis of actual samples can begin. If any individual s exceeds the precision limit or any individual  $\bar{X}$  falls outside the range for accuracy, the system performance is unacceptable for that parameter. Locate and correct the source of the problem and repeat the test for all parameters of interest beginning with Section 8.2.2.
- 8.3 The laboratory must, on an ongoing basis, spike at least 10% of the samples from each sample site being monitored to assess accuracy. For laboratories analyzing one to ten samples per month, at least one spiked sample per month is required.
- 8.3.1 The concentration of the spike in the sample should be determined as follows:
- 8.3.1.1 If, as in compliance monitoring, the concentration of a specific parameter in the sample is being checked against a regulatory concentration limit, the spike should be at that limit or one to five times higher than the background concentration determined in Section 8.3.2, whichever concentration would be larger.
- 8.3.1.2 If the concentration of a specific parameter in the sample is not being checked against a limit specific to that parameter, the spike should be at 20  $\mu\text{g/L}$  or one to five times higher than the background concentration determined in Section 8.3.2, whichever concentration would be larger.
- 8.3.1.3 If it is impractical to determine background levels before spiking (e.g., maximum holding times will be exceeded), the spike concentration should be (1) the regulatory concentration limit, if any; or, if none (2) the larger of either five times higher than the expected background concentration or 20  $\mu\text{g/L}$ .
- 8.3.2 Analyze one sample aliquot to determine the background concentration (B) of each parameter. If necessary, prepare a new QC check sample concentrate (Section 8.2.1) appropriate for the background concentrations in the sample. Spike a second sample aliquot with 1.0 mL of the QC check sample concentrate and analyze it to determine the concentration after spiking (A) of each parameter. Calculate each percent recovery (P) as  $100(A-B)\%/T$ , where T is the known true value of the spike.
- 8.3.3 Compare the percent recovery (P) for each parameter with the corresponding QC acceptance criteria found in Table 2. These acceptance criteria were calculated to include an allowance for error in measurement of both the

background and spike concentrations, assuming a spike to background ratio of 5:1. This error will be accounted for to the extent that the analyst's spike to background ratio approaches 5:1.<sup>18</sup> If spiking was performed at a concentration lower than 20 µg/L, the analyst must use either the QC acceptance criteria in Table 2, or optional QC acceptance criteria calculated for the specific spike concentration. To calculate optional acceptance criteria for the recovery of a parameter: (1) Calculate accuracy ( $X'$ ) using the equation in Table 3, substituting the spike concentration (T) for C; (2) calculate overall precision ( $S'$ ) using the equation in Table 3, substituting  $X'$  for  $\bar{X}$ ; (3) calculate the range for recovery at the spike concentration as  $(100 X'/T) \pm 2.44(100 S'/T)\%$ .<sup>18</sup>

8.3.4 If any individual P falls outside the designated range for recovery, that parameter has failed the acceptance criteria. A check standard containing each parameter that failed the criteria must be analyzed as described in Section 8.4.

8.4 If any parameter fails the acceptance criteria for recovery in Section 8.3, a QC check standard containing each parameter that failed must be prepared and analyzed.

*NOTE:* The frequency for the required analysis of a QC check standard will depend upon the number of parameters being simultaneously tested, the complexity of the sample matrix, and the performance of the laboratory.

8.4.1 Prepare the QC check standard by adding 1.0 mL of QC check sample concentrate (Section 8.2.1 or 8.3.2) to 1 L of reagent water. The QC check standard needs only to contain the parameters that failed criteria in the test in Section 8.3.

8.4.2 Analyze the QC check standard to determine the concentration measured (A) of each parameter. Calculate each percent recovery ( $P_s$ ) as  $100 (A/T)\%$ , where T is the true value of the standard concentration.

8.4.3 Compare the percent recovery ( $P_s$ ) for each parameter with the corresponding QC acceptance criteria found in Table 2. Only parameters that failed the test in Section 8.3 need to be compared with these criteria. If the recovery of any such parameter falls outside the designated range, the laboratory performance for that parameter is judged to be out of control, and the problem must be immediately identified and corrected. The analytical result for that parameter in the unspiked sample is suspect and may not be reported for regulatory compliance purposes.

8.5 As part of the QC program for the laboratory, method accuracy for wastewater samples must be assessed and records must be maintained. After the analysis of five spiked wastewater samples as in Section 8.3, calculate the average percent recovery ( $\bar{P}$ ) and the standard deviation of the percent recovery ( $s_p$ ). Express the accuracy assessment as a percent recovery interval from  $\bar{P}-2s_p$  to  $\bar{P}+2s_p$ . If  $\bar{P}=90\%$  and  $s_p=10\%$ , for example, the accuracy interval is expressed as 70-110%. Update the accuracy

assessment for each parameter on a regular basis (e.g., after each 5-10 new accuracy measurements).

- 8.6 It is recommended that the laboratory adopt additional quality assurance practices for use with this method. The specific practices that are most productive depend upon the needs of the laboratory and the nature of the samples. Field duplicates may be analyzed to assess the precision of the environmental measurements. When doubt exists over the identification of a peak on the chromatogram, confirmatory techniques such as gas chromatography with a dissimilar column, specific element detector, or mass spectrometer must be used. Whenever possible, the laboratory should analyze standard reference materials and participate in relevant performance evaluation studies.

## **9. Sample Collection, Preservation, and Handling**

- 9.1 Grab samples must be collected in glass containers. Conventional sampling practices<sup>19</sup> should be followed, except that the bottle must not be prerinsed with sample before collection. Composite samples should be collected in refrigerated glass containers in accordance with the requirements of the program. Automatic sampling equipment must be as free as possible of Tygon tubing and other potential sources of contamination.
- 9.2 All samples must be iced or refrigerated at 4°C from the time of collection until extraction. Fill the sample bottles and, if residual chlorine is present, add 80 mg of sodium thiosulfate per liter of sample and mix well. EPA Methods 330.4 and 330.5 may be used for measurement of residual chlorine.<sup>20</sup> Field test kits are available for this purpose. If N-nitrosodiphenylamine is to be determined, adjust the sample pH to 7-10 with sodium hydroxide solution or sulfuric acid.
- 9.3 All samples must be extracted within seven days of collection and completely analyzed within 40 days of extraction.<sup>4</sup>
- 9.4 Nitrosamines are known to be light sensitive.<sup>7</sup> Samples should be stored in amber or foil-wrapped bottles in order to minimize photolytic decomposition.

## **10. Sample Extraction**

- 10.1 Mark the water meniscus on the side of the sample bottle for later determination of sample volume. Pour the entire sample into a 2 L separatory funnel. Check the pH of the sample with wide-range pH paper and adjust to within the range of 5-9 with sodium hydroxide solution or sulfuric acid.
- 10.2 Add 60 mL of methylene chloride to the sample bottle, seal, and shake 30 seconds to rinse the inner surface. Transfer the solvent to the separatory funnel and extract the sample by shaking the funnel for two minutes with periodic venting to release excess pressure. Allow the organic layer to separate from the water phase for a minimum of 10 minutes. If the emulsion interface between layers is more than one-third the volume of the solvent layer, the analyst must employ mechanical techniques to complete the phase separation. The optimum technique depends upon the sample, but may include stirring, filtration of the emulsion through glass wool, centrifugation,

or other physical methods. Collect the methylene chloride extract in a 250 mL Erlenmeyer flask.

- 10.3 Add a second 60 mL volume of methylene chloride to the sample bottle and repeat the extraction procedure a second time, combining the extracts in the Erlenmeyer flask. Perform a third extraction in the same manner.
- 10.4 Assemble a Kuderna-Danish (K-D) concentrator by attaching a 10 mL concentrator tube to a 500-mL evaporative flask. Other concentration devices or techniques may be used in place of the K-D concentrator if the requirements of Section 8.2 are met.
- 10.5 Add 10 mL of hydrochloric acid to the combined extracts and shake for two minutes. Allow the layers to separate. Pour the combined extract through a solvent-rinsed drying column containing about 10 cm of anhydrous sodium sulfate, and collect the extract in the K-D concentrator. Rinse the Erlenmeyer flask and column with 20-30 mL of methylene chloride to complete the quantitative transfer.
- 10.6 Add one or two clean boiling chips to the evaporative flask and attach a three-ball Snyder column. Prewet the Snyder column by adding about 1 mL of methylene chloride to the top. Place the K-D apparatus on a hot water bath (60-65°C) so that the concentrator tube is partially immersed in the hot water, and the entire lower rounded surface of the flask is bathed with hot vapor. Adjust the vertical position of the apparatus and the water temperature as required to complete the concentration in 15-20 minutes. At the proper rate of distillation the balls of the column will actively chatter but the chambers will not flood with condensed solvent. When the apparent volume of liquid reaches 1 mL, remove the K-D apparatus and allow it to drain and cool for at least 10 minutes.
- 10.7 Remove the Snyder column and rinse the flask and its lower joint into the concentrator tube with 1-2 mL of methylene chloride. A 5 mL syringe is recommended for this operation. Stopper the concentrator tube and store refrigerated if further processing will not be performed immediately. If the extract will be stored longer than two days, it should be transferred to a Teflon-sealed screw-cap vial. If N-nitrosodiphenylamine is to be measured by gas chromatography, the analyst must first use a cleanup column to eliminate diphenylamine interference (Section 11). If N-nitrosodiphenylamine is of no interest, the analyst may proceed directly with gas chromatographic analysis (Section 12).
- 10.8 Determine the original sample volume by refilling the sample bottle to the mark and transferring the liquid to a 1000 mL graduated cylinder. Record the sample volume to the nearest 5 mL.

## **11. Cleanup and Separation**

- 11.1 Cleanup procedures may not be necessary for a relatively clean sample matrix. If particular circumstances demand the use of a cleanup procedure, the analyst may use either procedure below or any other appropriate procedure. However, the analyst first must demonstrate that the requirements of Section 8.2 can be met using the method as revised to incorporate the cleanup procedure. Diphenylamine, if present in

the original sample extract, must be separated from the nitrosamines if N-nitrosodiphenylamine is to be determined by this method.

11.2 If the entire extract is to be cleaned up by one of the following procedures, it must be concentrated to 2.0 mL. To the concentrator tube in Section 10.7, add a clean boiling chip and attach a two-ball micro-Snyder column. Pre-wet the column by adding about 0.5 mL of methylene chloride to the top. Place the micro-K-D apparatus on a hot water bath (60-65°C) so that the concentrator tube is partially immersed in the hot water. Adjust the vertical position of the apparatus and the water temperature as required to complete the concentration in 5-10 minutes. At the proper rate of distillation the balls of the column will actively chatter but the chambers will not flood. When the apparent volume of liquid reaches about 0.5 mL, remove the K-D apparatus and allow it to drain and cool for at least 10 minutes. Remove the micro-Snyder column and rinse its lower joint into the concentrator tube with 0.2 mL of methylene chloride. Adjust the final volume to 2.0 mL and proceed with one of the following cleanup procedures.

### 11.3 Florisil column cleanup for nitrosamines

11.3.1 Place 22 g of activated Florisil into a 22 mm ID chromatographic column. Tap the column to settle the Florisil and add about 5 mm of anhydrous sodium sulfate to the top.

11.3.2 Preelute the column with 40 mL of ethyl ether/pentane (15+85) (V/V). Discard the eluate and just prior to exposure of the sodium sulfate layer to the air, quantitatively transfer the 2 mL sample extract onto the column using an additional 2 mL of pentane to complete the transfer.

11.3.3 Elute the column with 90 mL of ethyl ether/pentane (15+85) (V/V) and discard the eluate. This fraction will contain the diphenylamine, if it is present in the extract.

11.3.4 Next, elute the column with 100 mL of acetone/ethyl ether (5+95) (V/V) into a 500 mL K-D flask equipped with a 10 mL concentrator tube. This fraction will contain all of the nitrosamines listed in the scope of the method.

11.3.5 Add 15 mL of methanol to the collected fraction and concentrate as in Section 10.6, except use pentane to prewet the column and set the water bath at 70-75°C. When the apparatus is cool, remove the Snyder column and rinse the flask and its lower joint into the concentrator tube with 1-2 mL of pentane. Analyze by gas chromatography (Section 12).

### 11.4 Alumina column cleanup for nitrosamines

11.4.1 Place 12 g of the alumina preparation (Section 6.10) into a 10 mm ID chromatographic column. Tap the column to settle the alumina and add 1-2 cm of anhydrous sodium sulfate to the top.

- 11.4.2 Pre-elute the column with 10 mL of ethyl ether/pentane (3+7) (V/V). Discard the eluate (about 2 mL) and just prior to exposure of the sodium sulfate layer to the air, quantitatively transfer the 2 mL sample extract onto the column using an additional 2 mL of pentane to complete the transfer.
- 11.4.3 Just prior to exposure of the sodium sulfate layer to the air, add 70 mL of ethyl ether/pentane (3+7) (V/V). Discard the first 10 mL of eluate. Collect the remainder of the eluate in a 500-mL K-D flask equipped with a 10-mL concentrator tube. This fraction contains N-nitrosodiphenylamine and probably a small amount of N-nitrosodi-n-propylamine.
- 11.4.4 Next, elute the column with 60 mL of ethyl ether/pentane (1+1) (V/V), collecting the eluate in a second K-D flask equipped with a 10 mL concentrator tube. Add 15 mL of methanol to the K-D flask. This fraction will contain N-nitrosodimethylamine, most of the N-nitrosodi-n-propylamine and any diphenylamine that is present.
- 11.4.5 Concentrate both fractions as in Section 10.6, except use pentane to prewet the column. When the apparatus is cool, remove the Snyder column and rinse the flask and its lower joint into the concentrator tube with 1-2 mL of pentane. Analyze the fractions by gas chromatography (Section 12).

## 12. Gas Chromatography

- 12.1 N-nitrosodiphenylamine completely reacts to form diphenylamine at the normal operating temperatures of a GC injection port (200-250°C). Thus, N-nitrosodiphenylamine is chromatographed and detected as diphenylamine. Accurate determination depends on removal of diphenylamine that may be present in the original extract prior to GC analysis (See Section 11).
- 12.2 Table 1 summarizes the recommended operating conditions for the gas chromatograph. Included in this table are retention times and MDL that can be achieved under these conditions. Examples of the separations achieved by Column 1 are shown in Figures 1 and 2. Other packed or capillary (open-tubular) columns, chromatographic conditions, or detectors may be used if the requirements of Section 8.2 are met.
- 12.3 Calibrate the system daily as described in Section 7.
- 12.4 If the extract has not been subjected to one of the cleanup procedures in Section 11, it is necessary to exchange the solvent from methylene chloride to methanol before the thermionic detector can be used. To a 1-10 mL volume of methylene chloride extract in a concentrator tube, add 2 mL of methanol and a clean boiling chip. Attach a two-ball micro-Snyder column to the concentrator tube. Pre-wet the column by adding about 0.5 mL of methylene chloride to the top. Place the micro-K-D apparatus on a boiling (100°C) water bath so that the concentrator tube is partially immersed in the hot water. Adjust the vertical position of the apparatus and the water temperature as required to complete the concentration in 5-10 minutes. At the proper rate of distillation the balls of the column will actively chatter but the chambers will not flood. When the apparent volume of liquid reaches about 0.5 mL, remove the

K-D apparatus and allow it to drain and cool for at least 10 minutes. Remove the micro-Snyder column and rinse its lower joint into the concentrator tube with 0.2 mL of methanol. Adjust the final volume to 2.0 mL.

- 12.5 If the internal standard calibration procedure is being used, the internal standard must be added to the sample extract and mixed thoroughly immediately before injection into the gas chromatograph.
- 12.6 Inject 2-5  $\mu\text{L}$  of the sample extract or standard into the gas chromatograph using the solvent-flush technique.<sup>21</sup> Smaller (1.0  $\mu\text{L}$ ) volumes may be injected if automatic devices are employed. Record the volume injected to the nearest 0.05  $\mu\text{L}$ , and the resulting peak size in area or peak height units.
- 12.7 Identify the parameters in the sample by comparing the retention times of the peaks in the sample chromatogram with those of the peaks in standard chromatograms. The width of the retention time window used to make identifications should be based upon measurements of actual retention time variations of standards over the course of a day. Three times the standard deviation of a retention time for a compound can be used to calculate a suggested window size; however, the experience of the analyst should weigh heavily in the interpretation of chromatograms.
- 12.8 If the response for a peak exceeds the working range of the system, dilute the extract and reanalyze.
- 12.9 If the measurement of the peak response is prevented by the presence of interferences, further cleanup is required.

### 13. Calculations

- 13.1 Determine the concentration of individual compounds in the sample.

13.1.1 If the external standard calibration procedure is used, calculate the amount of material injected from the peak response using the calibration curve or calibration factor determined in Section 7.2.2. The concentration in the sample can be calculated from Equation 2.

*Equation 2*

$$\text{Concentration } (\mu\text{g/L}) = \frac{(A) (V_t)}{(V_i) (V_s)}$$

where:

- A = Amount of material injected (ng).
- $V_i$  = Volume of extract injected ( $\mu\text{L}$ ).
- $V_t$  = Volume of total extract ( $\mu\text{L}$ ).
- $V_s$  = Volume of water extracted (mL).

- 13.1.2 If the internal standard calibration procedure is used, calculate the concentration in the sample using the response factor (RF) determined in Section 7.3.2 and Equation 3.

*Equation 3\*\**

$$\text{Concentration, } \mu\text{g/L} = \frac{(A_s) (I_s)}{(A_{is}) (RF) (V_o)}$$

where:

$A_s$  = Response for the parameter to be measured.

$A_{is}$  = Response for the internal standard.

$I_s$  = Amount of internal standard added to each extract ( $\mu\text{g}$ ).

$V_o$  = Volume of water extracted (L).

- 13.2 Report results in  $\mu\text{g/L}$  without correction for recovery data. All QC data obtained should be reported with the sample results.

#### **14. Method Performance**

- 14.1 The method detection limit (MDL) is defined as the minimum concentration of a substance that can be measured and reported with 99% confidence that the value is above zero.<sup>3</sup> The MDL concentrations listed in Table 1 were obtained using reagent water.<sup>22</sup> Similar results were achieved using representative wastewaters. The MDL actually achieved in a given analysis will vary depending on instrument sensitivity and matrix effects.
- 14.2 This method has been tested for linearity of spike recovery from reagent water and has been demonstrated to be applicable over the concentration range from 4 x MDL to 1000 x MDL.<sup>22</sup>
- 14.3 This method was tested by 17 laboratories using reagent water, drinking water, surface water, and three industrial wastewaters spiked at six concentrations over the range 0.8-55  $\mu\text{g/L}$ .<sup>23</sup> Single operator precision, overall precision, and method accuracy were found to be directly related to the concentration of the parameter and essentially independent of the sample matrix. Linear equations to describe these relationships are presented in Table 3.

---

\*\*This equation has been amended to reflect the original as published in 40 CFR 136, FRL-2636-6 40 FR 43234, October 26, 1984.



## References

1. Fine, D.H., Lieb, D., and Rufeh, R. "Principle of Operation of the Thermal Energy Analyzer for the Trace Analysis of Volatile and Non-Volatile N-Nitroso Compounds," *Journal of Chromatography*, 107, 351 (1975).
2. Fine, D.H., Hoffman, F., Rounbehler, D.P., and Belcher, N.M. "Analysis of N-Nitroso Compounds by Combined High Performance Liquid Chromatography and Thermal Energy Analysis," Walker, E.A., Bogovski, P., and Griciute, L., Editors, N-Nitroso Compounds-Analysis and Formation, Lyon, International Agency for Research on Cancer (IARC Scientific Publications No. 14), pp. 43-50 (1976).
3. 40 CFR Part 136, Appendix B.
4. "Determination of Nitrosamines in Industrial and Municipal Wastewaters," EPA 600/4-82-016, National Technical Information Service, PB82-199621, Springfield, Virginia 22161, April 1982.
5. ASTM Annual Book of Standards, Part 31, D3694-78. "Standard Practices for Preparation of Sample Containers and for Preservation of Organic Constituents," American Society for Testing and Materials, Philadelphia.
6. Buglass, A.J., Challis, B.C., and Osborn, M.R. "Transnitrosation and Decomposition of Nitrosamines," Bogovski, P. and Walker, E.A., Editors, N-Nitroso Compounds in the Environment, Lyon, International Agency for Research on Cancer (IARC Scientific Publication No. 9), pp. 94-100 (1974).
7. Burgess, E.M. and Lavanish, J.M. "Photochemical Decomposition of N-Nitrosamines," *Tetrahedron Letters*, 1221 (1964)
8. Druckrey, H., Preussmann, R., Ivankovic, S., and Schmahl, D. "Organotrope Carcinogene Wirkungen bei 65 Verschiedenen N-NitrosoVerbindungen an BD-Ratten," *Z. Krebsforsch.*, 69, 103 (1967).
9. Fiddler, W. "The Occurrence and Determination of N-Nitroso Compounds," *Toxicol. Appl. Pharmacol.*, 31, 352 (1975).
10. "Carcinogens-Working With Carcinogens," Department of Health, Education, and Welfare, Public Health Service, Center for Disease Control, National Institute for Occupational Safety and Health, Publication No. 77-206, August 1977.
11. "OSHA Safety and Health Standards, General Industry," (29 CFR Part 1910), Occupational Safety and Health Administration, OSHA 2206 (Revised, January 1976).
12. "Safety in Academic Chemistry Laboratories," American Chemical Society Publication, Committee on Chemical Safety, 3rd Edition, 1979.
13. Lijinsky, W. "How Nitrosamines Cause Cancer," *New Scientist*, 73, 216 (1977).

14. Mirvish, S.S. "N-Nitroso Compounds: Their Chemical and In Vivo Formation and Possible Importance as Environmental Carcinogens," *J. Toxicol. Environ. Health*, 3, 1267 (1977).
15. "Reconnaissance of Environmental Levels of Nitrosamines in the Central United States," EPA-330/1-77-001, National Enforcement Investigations Center, U.S. Environmental Protection Agency (1977).
16. "Atmospheric Nitrosamine Assessment Report," Office of Air Quality Planning and Standards, U.S. Environmental Protection Agency, Research Triangle Park, North Carolina (1976).
17. "Scientific and Technical Assessment Report on Nitrosamines," EPA-660/6-7-001, Office of Research and Development, U.S. Environmental Protection Agency (1976).
18. Provost, L.P. and Elder, R.S. "Interpretation of Percent Recovery Data," *American Laboratory*, 15, 58-63 (1983). (The value 2.44 used in the equation in Section 8.3.3 is two times the value of 1.22 derived in this report.)
19. ASTM Annual Book of Standards, Part 31, D3370-76. "Standard Practices for Sampling Water," American Society for Testing and Materials, Philadelphia.
20. "Methods 330.4 (Titrimetric, DPD-FAS) and 330.5 (Spectrophotometric, DPD) for Chlorine, Total Residual," Methods for Chemical Analysis of Water and Wastes, EPA-600/4-79-020, U.S. Environmental Protection Agency, Environmental Monitoring and Support Laboratory, Cincinnati, Ohio 45268, March 1979.
21. Burke, J. A. "Gas Chromatography for Pesticide Residue Analysis; Some Practical Aspects," *Journal of the Association of Official Analytical Chemists*, 48, 1037 (1965).
22. "Method Detection Limit and Analytical Curve Studies EPA Methods 606, 607, and 608," Special letter report for EPA Contract 68-03-2606, U.S. Environmental Protection Agency, Environmental Monitoring and Support Laboratory, Cincinnati, Ohio 45268, June 1980.
23. "EPA Method Study 17 Method 607-Nitrosamines," EPA 600/4-84-051, National Technical Information Service, PB84-207646, Springfield, Virginia 22161, June 1984.

**Table 1—Chromatographic Conditions and Method Detection Limits**

Parameter	Retention time (min)		Method detection limit (µg/L)
	Column 1	Column 2	
N-Nitrosodimethylamine . . . . .	4.1	0.88	0.15
N-Nitrosodi-n-propylamine . . . . .	12.1	4.2	.46
N-Nitrosodiphenylamine <sup>a</sup> . . . . .	<sup>b</sup> 12.8	<sup>c</sup> 6.4	.81

Column 1 conditions: Chromosorb W - AW (80/100 mesh) coated with 10% Carbowax 20 M/2% KOH packed in a 1.8 m long x 4mm ID glass column with helium carrier gas at 40 mL/min. flow rate. Column temperature held isothermal at 110°C, except where otherwise indicated.

Column 2 conditions: Supelcoport (100/120 mesh) coated with 10% SP-2250 packed in a 1.8 m long x 4 mm ID glass column with helium carrier gas at 40 mL/min. flow rate. Column temperature held isothermal at 120°C, except where otherwise indicated.

<sup>a</sup>Measured as diphenylamine.

<sup>b</sup>220°C column temperature.

<sup>c</sup>210°C column temperature.

**Table 2—QC Acceptance Criteria—Method 607**

Parameter	Test conc. (µg/L)	Limit for s (µg/L)	Range for $\bar{X}$ (µg/L)	Range for P, P <sub>s</sub> (%)
N-Nitrosodimethylamine . . . . .	20	3.4	4.6-20.0	13-109
N-Nitrosodiphenyl . . . . .	20	6.1	2.1-24.5	D-139
N-Nitrosodi-n-propylamine . . .	20	5.7	11.5-26.8	45-146

s = Standard deviation for four recovery measurements, in µg/L (Section 8.2.4).

$\bar{X}$  = Average recovery for four recovery measurements, in µg/L (Section 8.2.4).

P, P<sub>s</sub> = Percent recovery measured (Section 8.3.2, Section 8.4.2).

D = Detected; result must be greater than zero.

**NOTE:** These criteria are based directly upon the method performance data in Table 3. Where necessary, the limits for recovery have been broadened to assure applicability of the limits to concentrations below those used to develop Table 3.

**Table 3—Method Accuracy and Precision as Functions of Concentration—Method 607**

Parameter	Accuracy, as recovery, $X'$ ( $\mu\text{g/L}$ )	Single analyst precision, $s_r'$ ( $\mu\text{g/L}$ )	Overall precision, $S'$ ( $\mu\text{g/L}$ )
N-Nitrosodimethylamine . . . . .	$0.37C+0.06$	$0.25\bar{X} - 0.04$	$0.25\bar{X} + 0.11$
N-Nitrosodiphenylamine . . . . .	$0.64C+0.52$	$0.36\bar{X} - 1.53$	$0.46\bar{X} - 0.47$
N-Nitrosodi-n-propylamine . . . . .	$0.96C - 0.07$	$0.15\bar{X} + 0.13$	$0.21\bar{X} + 0.15$

$X'$  = Expected recovery for one or more measurements of a sample containing a concentration of  $C$ , in  $\mu\text{g/L}$ .

$s_r'$  = Expected single analyst standard deviation of measurements at an average concentration found of  $\bar{X}$ , in  $\mu\text{g/L}$ .

$S'$  = Expected interlaboratory standard deviation of measurements at an average concentration found of  $\bar{X}$ , in  $\mu\text{g/L}$ .

$C$  = True value for the concentration, in  $\mu\text{g/L}$ .

$\bar{X}$  = Average recovery found for measurements of samples containing a concentration of  $C$ , in  $\mu\text{g/L}$ .

COLUMN: 10% CARBOWAX 20M / 2% KOH ON CHROMOSORB W-AW  
TEMPERATURE: 110°C  
DETECTOR: PHOSPHORUS/NITROGEN

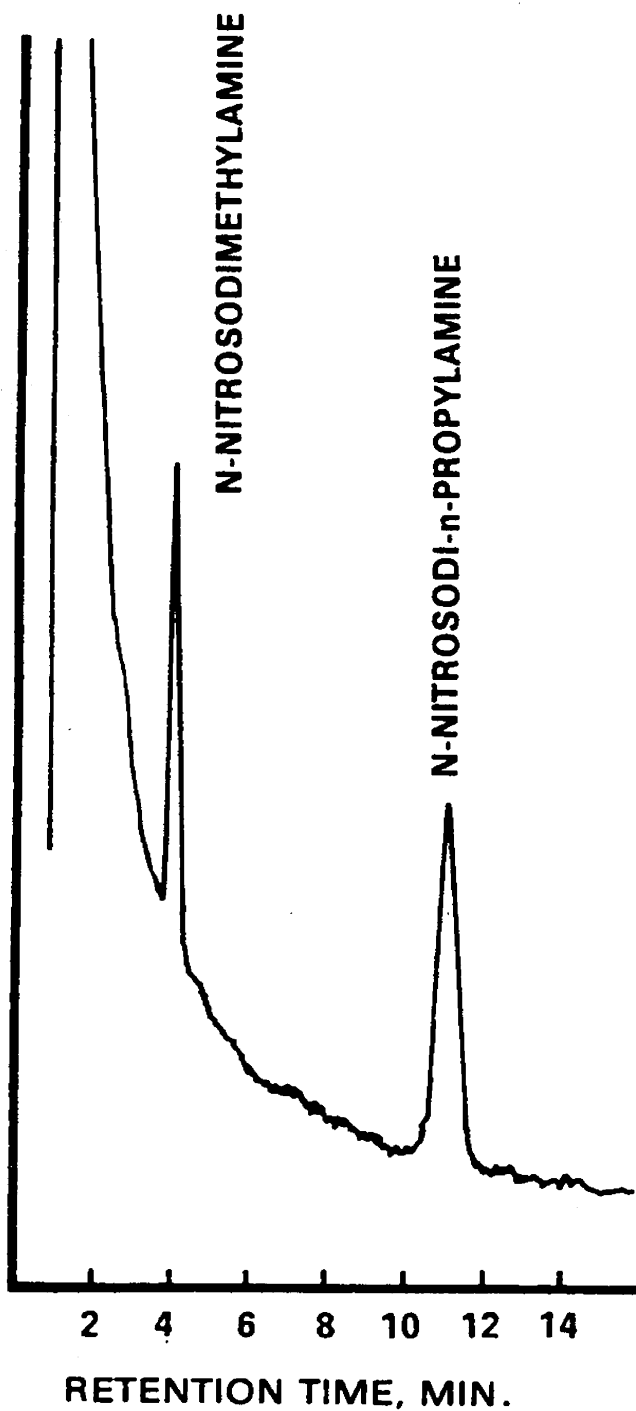


Figure 1. Gas chromatogram of nitrosamines.

COLUMN: 10% CARBOWAX 20M / 2% KOH ON CHROMOSORB W-AW  
TEMPERATURE: 220°C  
DETECTOR: PHOSPHORUS/NITROGEN

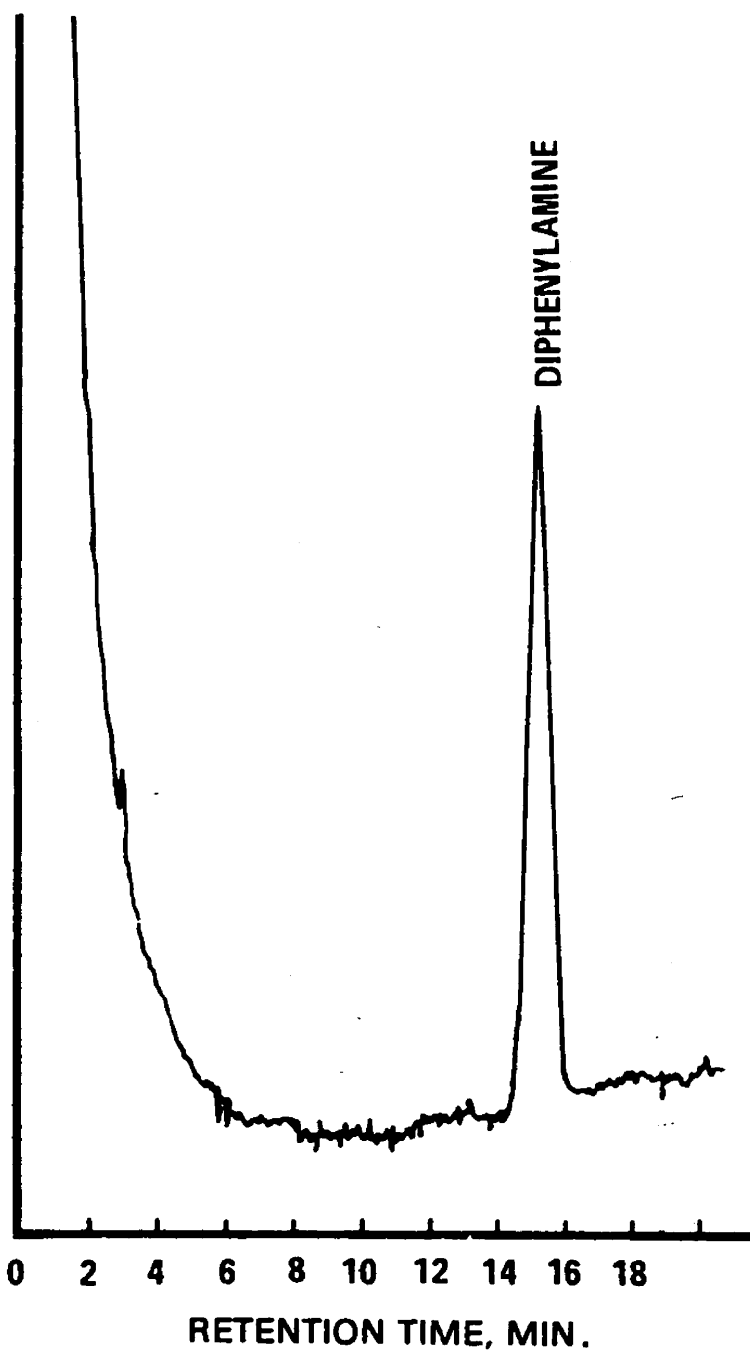


Figure 2. Gas chromatogram of N-nitrosodiphenylamine as diphenylamine.