



Interchim innovations



"Experience the Evolution"

PuriFlash™

Ultra Performance Flash Purification columns















Sílice (Especificaciones, Aplicaciones Típicas)

Código	Forma	Tipo	Poros	Superficie	Tamaño	Química	End Capping	Estabilidad pH	Comentario	Aplicación Típica
PF-15SIHP	S	Silica HP	60 Å	500 m ² /g	15 µm	Silice	no	1.5 - 6.5		Compuestos Polares No-iónicos
PF-30SIHP	S	Silica HP	60 Å	500 m ² /g	30 µm	Silice	no	1.5 - 6.5		
PF-50SIHP	S	Silica HP	60 Å	500 m ² /g	50 µm	Silice	no	1.5 - 6.5		
PF-50SIHC	S	Silica HC	60 Å	680 m ² /g	50 µm	Silice	no	1.5 - 6.5	Su Área Superficial de 680 m ² /g ofrece la mayor capacidad de carga	
IR-50SI	IR	Silica Std	60 Å	450 m ² /g	50 µm	Silice	no	1.5 - 6.5	Compuestos Polares No-iónicos	
PF-15C18	S	Silica HP	60 Å	500 m ² /g	15 µm	C18	Multi Etapa	1 - 7.5	Carbono : 21%	Para muchas aplicaciones farmacéuticas. La alta densidad de enlace de C18 facilita la purificación de compuestos no polares. La tecnología de enlace Multi Etapa garantiza una fase totalmente bloqueada, estable en condiciones básicas. Es una fase excelente para la purificación integral de drogas básicas.
PF-30C18	S	Silica HP	60 Å	500 m ² /g	30 µm	C18	Multi Etapa	1 - 7.5	Carbono : 21%	
PF-50C18	S	Silica HP	60 Å	500 m ² /g	50 µm	C18	Multi Etapa	1 - 7.5	Carbono : 21%	
IR-50C18	IR	Silica Std	60 Å	450 m ² /g	50 µm	C18	Una Etapa	1.5 - 7.0	Carbono : 20%	Fase C18 de referencia. Sirve una amplia gama de necesidades de purificación de compuestos apolares y de media polaridad.
PF-30NH2	S	Silica HP	100 Å	400 m ² /g	30 µm	NH2	Una Etapa	2 - 6.5	Carbono : 4%	Carbohidratos / compuestos orgánicos polares / aniones y ácidos orgánicos
PF-50NH2	S	Silica HP	100 Å	400 m ² /g	50 µm	NH2	Una Etapa	2 - 6.5	Carbono : 4%	
PF-50MM1	G	Silica HP	60 Å	450 m ² /g	60 µm	MM1	no	2 - 6.5	RP/SCX 0.09 meq/g	Compuestos orgánicos apolares y de media polaridad en forma catiónica
PF-50SCX	G	Silica HP	300 Å	100 m ² /g	50 µm	SCX	no	1 - 7.5	Carbono : 8% 0.3 meq/g	Compuestos catiónicos y compuestos orgánicos básicos
PF-100P6	G	Polyamide	60 Å		100 µm	P6	no			Flavonoides, Extractos de Plantas Naturales
PF-ALN	G	Alumina	60 Å	200 m ² /g	32/63 µm		no	1-12	Neutra	Compuestos polares no iónicos
PF-ALB	G	Alumina	60 Å	200 m ² /g	32/63 µm		no	1-12	Básica	Compuestos polares no iónicos
PT-15C18T	S	Silica HP	200 Å	150 m ² /g	15 µm	C18T	Una Etapa	1.5 - 8	Carbono : 14%	Péptidos débilmente hidrofóbicos y Oligopéptidos hasta 50 kD
PT-30C18T	S	Silica HP	200 Å	150 m ² /g	30 µm	C18T	Una Etapa	1.5 - 8	Carbono : 14%	
PT-15C8	S	Silica HP	200 Å	150 m ² /g	15 µm	C8	Una Etapa	2 - 7	Carbono : 5%	Péptidos mediamente hidrofóbicos y Oligopéptidos hasta 60 kD
PT-30C8	S	Silica HP	200 Å	150 m ² /g	30 µm	C8	Una Etapa	2 - 7	Carbono : 5%	
PT-15C4	S	Silica HP	200 Å	150 m ² /g	15 µm	C4	Una Etapa	2 - 7	Carbono : 3%	Péptidos hidrofóbicos y Oligopéptidos hasta 60 kD
PT-30C4	S	Silica HP	200 Å	150 m ² /g	30 µm	C4	Una Etapa	2 - 7	Carbono : 3%	
PP-15C18T	S	Silica HP	300 Å	100 m ² /g	15 µm	C18T	Una Etapa	1.5 - 8	Carbono : 6%	Péptidos mediamente hidrofóbicos y Oligopéptidos hasta 40 kD
PP-30C18T	S	Silica HP	300 Å	100 m ² /g	30 µm	C18T	Una Etapa	1.5 - 8	Carbono : 6%	
PP-15C8	S	Silica HP	300 Å	100 m ² /g	15 µm	C8	Una Etapa	2 - 7	Carbono : 4%	Polipéptidos Hidrofóbicos y Péptidos hasta 80 kD
PP-30C8	S	Silica HP	300 Å	100 m ² /g	30 µm	C8	Una Etapa	2 - 7	Carbono : 4%	
PP-15C4	S	Silica HP	300 Å	100 m ² /g	15 µm	C4	Una Etapa	2 - 7	Carbono : 2.5%	Proteínas Hidrofóbicas y Polipéptidos de 50 a 150 kD
PP-30C4	S	Silica HP	300 Å	100 m ² /g	30 µm	C4	Una Etapa	2 - 7	Carbono : 2.5%	
CF-90A500	S	Cellufine	500 kDa	n.a	90 µm	DEAE	no	1-13	1.3 meq/g - c >10mg BSA/ml	Intercambiador Aniónico Débil. Captura y purificación intermedia de proteínas, péptidos y enzimas.
CF-90Q500	S	Cellufine	500 kDa	n.a	90 µm	QA	no	2-12	1.5 meq/g - c >10mg BSA/ml	Intercambiador Catiónico Fuerte. Captura y purificación intermedia de proteínas, péptidos y enzimas.
CF-90C500	S	Cellufine	500 kDa	n.a	90 µm	CM	no	1-13	1.1 meq/g - c >10mg BSA/ml	Intercambiador Catiónico Débil. Captura y purificación intermedia de proteínas, péptidos y enzimas.
CF-75SO4	S	Cellufine	3 kDa	n.a	75 µm	Sulfato	no	3-12	>700 µg/g - c >3mg Lisozima/ml	Purificación de proteínas de Virus y proteínas de enlace con Heparina
CF-90EL	S	Cellufine	2000 kDa	n.a	90 µm	Etclean L	no	2-13	480 µg endotoxina/ml	Eliminación de Endotoxinas
CF-75ES	S	Cellufine	2 kDa	n.a	75 µm	Etclean S	no	2-13	185 µg endotoxina/ml	Eliminación de Endotoxinas
CF-90C4	S	Cellufine	4000 kDa	n.a	90 µm	Butilo	no	2-13	>11 BSA/ml	Interacción Hidrofóbica
CF-90PH	S	Cellufine	4000 kDa	n.a	90 µm	Fenilo	no	2-13	>12 BSA/ml	Interacción Hidrofóbica

[S.P. : Stationary Phase - S : Spherical - IR : Irregular - G : Granular - HP : High Performance - HC : High Capacity - Std : Standard]



Hardware (Tamaños, Presión, Capacidad de Carga y Rango de Caudal)

Hardware : Tipo de Columna	DE x Long. Total	DI	Volumen Adsorbente	Presión Máx.	Masa Adsorbente	Capacidad de Carga	Caudal Típico	Rango Caudal
0004 	20 x 98 mm	12 mm	7 ml	22 bars /320 psi	virgen : 4 g	Std : 4 mg - 400 mg HP : 4 mg - 400 mg HC : 4 mg - 800 mg	7 ml/min	5 - 20 ml/min
					bonded : 6 g	Std : 4 mg - 180 mg HP : 4 mg - 180 mg		
0012 	28 x 117 mm	21 mm	27 ml	22 bars /320 psi	virgen : 12 g	Std : 40 mg - 1.2 g HP : 40mg - 1.2 g HC : 40 mg - 2.4 g	20 ml/min	15 - 50 ml/min
					bonded : 20 g	Std : 20 mg - 600 mg HP : 20 mg - 600 mg		
0025 	28 x 167 mm	21 mm	45 ml	22 bars /320 psi	virgen : 25 g	Std : 120 mg - 2.5 g HP : 120 mg - 2.5 g HC : 120 mg - 5 g	20 ml/min	15 - 50 ml/min
					bonded: 35 g	Std : 60 mg - 1 g HP : 60 mg - 1 g		
0040 	35 x 167 mm	27 mm	68 ml	20 bars /290 psi	virgen : 40 g	Std : 250 mg - 4 g HP : 250 mg - 4 g HC : 250 mg - 8 g	30 ml/min	20 - 70 ml/min
					bonded : 55 g	Std : 100 mg - 1.6 g HP : 100 mg - 1.6 g		
0080 	40 x 239 mm	31 mm	145 ml	20 bars /290 psi	virgen : 80 g	Std : 400 mg - 8 g HP : 400 mg - 8 g HC : 400 mg - 16 g	40 ml/min	30 - 100 ml/min
					bonded : 120 g	Std : 160 mg - 3.6 g HP : 160 mg - 3.6 g		
0120 	45 x 257 mm	36 mm	215 ml	20 bars /290 psi	virgen : 120 g	Std : 600 mg - 12 g HP : 600 mg - 12 g HC : 600 mg - 24 g	60 ml/min	40 - 150 ml/min
					bonded : 175 g	Std : 300 mg - 5 g HP : 300 mg - 5 g		
0200 	70 x 195 mm	60 mm	375 ml	20 bars /290 psi	virgen : 200 g	Std : 1 g - 20 g HP : 1 g - 20 g HC : 1 g - 40 g	160 ml/min	80 - 300 ml/min
					bonded : 300 g	Std : 500 mg - 9 g HP : 500 mg - 9 g		
0300 	70 x 270 mm	60 mm	575 ml	20 bars /290 psi	virgen : 300 g	Std : 2 g - 30 g HP : 2 g - 30 g HC : 2 g - 60 g	160 ml/min	80 - 300 ml/min
					bonded : 450 g	Std : 900 mg - 13 g HP : 900 mg - 13 g		
0800 	92 x 378 mm	78 mm	1540 ml	7 bars /100 psi	virgen : 800 g	Std : 4 g - 80 g HP : 4 g - 80 g HC : 4 g - 160 g	200 ml/min	150 - 300 ml/min
					bonded : 1250 g	Std : 1.5 g - 37 g HP : 1.5 g - 37 g		
1600 	117 x 426 mm	104 mm	3100 ml	7 bars /100 psi	virgen : 1600 g	Std : 8 g - 160 g HP : 8 g - 160 g HC : 8 g - 320 g	400 ml/min	200 - 500 ml/min
					bonded : 2500 g	Std : 3 g - 75 g HP : 3 g - 75 g		



Aplicaciones Biocromatografía	Capacidad de Carga	Presión Máx.	Estabilidad pH	Tipo Columna	DE x Long. Total	DI	Volumen Adsorbente	Rango Caudal
Cellufine A500 Intercambiador Aniónico Débil	> 10 mg BSA/ml gel	2 bars /29 psi	1 - 13	0004	20 x 98 mm	12 mm	7 ml	1 - 4 ml/min
				0012	28 x 117 mm	21 mm	27 ml	3 - 12 ml/min
				0025	28 x 167 mm	21 mm	45 ml	3 - 12 ml/min
				0040	35 x 167 mm	27 mm	68 ml	4 - 15 ml/min
				0080	40 x 239 mm	31 mm	145 ml	6 - 24 ml/min
				0120	45 x 257 mm	36 mm	215 ml	8.5 - 35 ml/min
				0200	70 x 195 mm	60 mm	375 ml	23 - 90 ml/min
				0300	70 x 270 mm	60 mm	575 ml	23 - 90 ml/min
				0800	92 x 378 mm	78 mm	1540 ml	40 - 160 ml/min
				1600	117 x 426 mm	104 mm	3100 ml	70 - 280 ml/min
Cellufine Q500 Intercambiador Aniónico Fuerte	> 10 mg BSA/ml gel	2 bars /29 psi	1 - 13	0004	20 x 98 mm	12 mm	7 ml	1 - 4 ml/min
				0012	28 x 117 mm	21 mm	27 ml	3 - 12 ml/min
				0025	28 x 167 mm	21 mm	45 ml	3 - 12 ml/min
				0040	35 x 167 mm	27 mm	68 ml	4 - 15 ml/min
				0080	40 x 239 mm	31 mm	145 ml	6 - 24 ml/min
				0120	45 x 257 mm	36 mm	215 ml	8.5 - 35 ml/min
				0200	70 x 195 mm	60 mm	375 ml	23 - 90 ml/min
				0300	70 x 270 mm	60 mm	575 ml	23 - 90 ml/min
				0800	92 x 378 mm	78 mm	1540 ml	40 - 160 ml/min
				1600	117 x 426 mm	104 mm	3100 ml	70 - 280 ml/min
Cellufine C500 Intercambiador Catiónico Débil	> 10 mg BSA/ml gel	2 bars /29 psi	1 - 13	0004	20 x 98 mm	12 mm	7 ml	1 - 4 ml/min
				0012	28 x 117 mm	21 mm	27 ml	3 - 12 ml/min
				0025	28 x 167 mm	21 mm	45 ml	3 - 12 ml/min
				0040	35 x 167 mm	27 mm	68 ml	4 - 15 ml/min
				0080	40 x 239 mm	31 mm	145 ml	6 - 24 ml/min
				0120	45 x 257 mm	36 mm	215 ml	8.5 - 35 ml/min
				0200	70 x 195 mm	60 mm	375 ml	23 - 90 ml/min
				0300	70 x 270 mm	60 mm	575 ml	23 - 90 ml/min
				0800	92 x 378 mm	78 mm	1540 ml	40 - 160 ml/min
				1600	117 x 426 mm	104 mm	3100 ml	70 - 280 ml/min
Cellufine Purificación Sulfate Virus	> 3 mg Lisozima/ml gel	2 bars /29 psi	3 - 12	0004	20 x 98 mm	12 mm	7 ml	1 - 4 ml/min
				0012	28 x 117 mm	21 mm	27 ml	3 - 12 ml/min
				0025	28 x 167 mm	21 mm	45 ml	3 - 12 ml/min
				0040	35 x 167 mm	27 mm	68 ml	4 - 15 ml/min
				0080	40 x 239 mm	31 mm	145 ml	6 - 24 ml/min
				0120	45 x 257 mm	36 mm	215 ml	8.5 - 35 ml/min
				0200	70 x 195 mm	60 mm	375 ml	23 - 90 ml/min
				0300	70 x 270 mm	60 mm	575 ml	23 - 90 ml/min
				0800	92 x 378 mm	78 mm	1540 ml	40 - 160 ml/min
				1600	117 x 426 mm	104 mm	3100 ml	70 - 280 ml/min



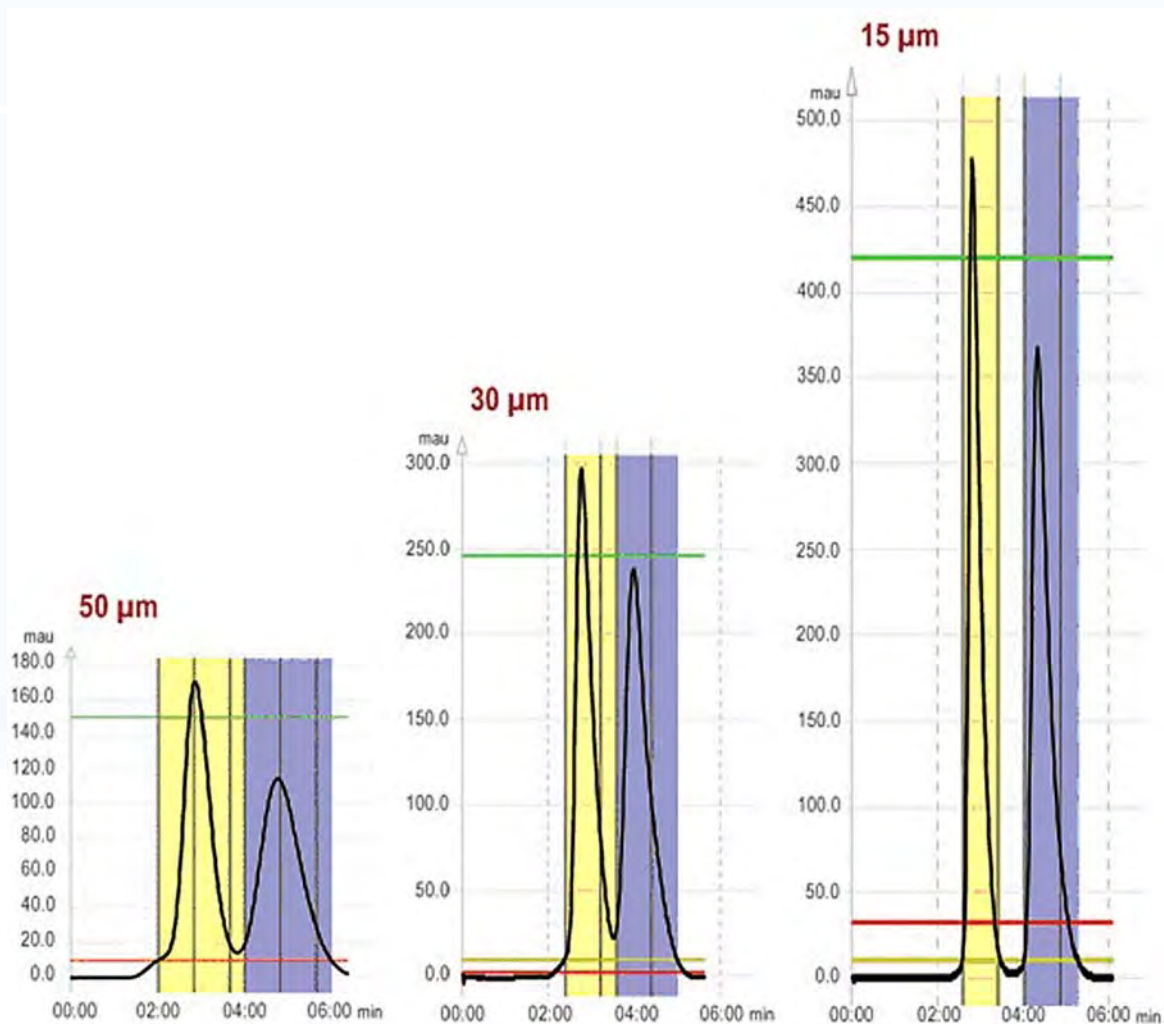
Aplicaciones Biocromatografía	Capacidad de Carga	Presión Máx.	Estabilidad pH	Tipo Columna	DE x Long. Total	DI	Volumen Adsorbente	Rango Caudal
Cellufine Eliminación Endotoxina L	480 µg endotoxina/ml gel	1 bar /14 psi	2 - 13	0004	20 x 98 mm	12 mm	7 ml	1 - 4 ml/min
				0012	28 x 117 mm	21 mm	27 ml	3 - 12 ml/min
				0025	28 x 167 mm	21 mm	45 ml	3 - 12 ml/min
				0040	35 x 167 mm	27 mm	68 ml	4 - 15 ml/min
				0080	40 x 239 mm	31 mm	145 ml	6 - 24 ml/min
				0120	45 x 257 mm	36 mm	215 ml	8.5 - 35 ml/min
				0200	70 x 195 mm	60 mm	375 ml	23 - 90 ml/min
				0300	70 x 270 mm	60 mm	575 ml	23 - 90 ml/min
				0800	92 x 378 mm	78 mm	1540 ml	40 - 160 ml/min
				1600	117 x 426 mm	104 mm	3100 ml	70 - 280 ml/min
Cellufine Eliminación Endotoxina L	185 µg endotoxina/ml gel	1 bar /14 psi	2 - 13	0004	20 x 98 mm	12 mm	7 ml	1 - 4 ml/min
				0012	28 x 117 mm	21 mm	27 ml	3 - 12 ml/min
				0025	28 x 167 mm	21 mm	45 ml	3 - 12 ml/min
				0040	35 x 167 mm	27 mm	68 ml	4 - 15 ml/min
				0080	40 x 239 mm	31 mm	145 ml	6 - 24 ml/min
				0120	45 x 257 mm	36 mm	215 ml	8.5 - 35 ml/min
				0200	70 x 195 mm	60 mm	375 ml	23 - 90 ml/min
				0300	70 x 270 mm	60 mm	575 ml	23 - 90 ml/min
				0800	92 x 378 mm	78 mm	1540 ml	40 - 160 ml/min
				1600	117 x 426 mm	104 mm	3100 ml	70 - 280 ml/min
Cellufine Butil HIC	> 11 mg BSA/ml gel	1 bar /14 psi	1 - 13	0004	20 x 98 mm	12 mm	7 ml	1 - 4 ml/min
				0012	28 x 117 mm	21 mm	27 ml	3 - 12 ml/min
				0025	28 x 167 mm	21 mm	45 ml	3 - 12 ml/min
				0040	35 x 167 mm	27 mm	68 ml	4 - 15 ml/min
				0080	40 x 239 mm	31 mm	145 ml	6 - 24 ml/min
				0120	45 x 257 mm	36 mm	215 ml	8.5 - 35 ml/min
				0200	70 x 195 mm	60 mm	375 ml	23 - 90 ml/min
				0300	70 x 270 mm	60 mm	575 ml	23 - 90 ml/min
				0800	92 x 378 mm	78 mm	1540 ml	40 - 160 ml/min
				1600	117 x 426 mm	104 mm	3100 ml	70 - 280 ml/min
Cellufine Fenil HIC	> 12 mg BSA/ml gel	1 bar /14 psi	1 - 13	0004	20 x 98 mm	12 mm	7 ml	1 - 4 ml/min
				0012	28 x 117 mm	21 mm	27 ml	3 - 12 ml/min
				0025	28 x 167 mm	21 mm	45 ml	3 - 12 ml/min
				0040	35 x 167 mm	27 mm	68 ml	4 - 15 ml/min
				0080	40 x 239 mm	31 mm	145 ml	6 - 24 ml/min
				0120	45 x 257 mm	36 mm	215 ml	8.5 - 35 ml/min
				0200	70 x 195 mm	60 mm	375 ml	23 - 90 ml/min
				0300	70 x 270 mm	60 mm	575 ml	23 - 90 ml/min
				0800	92 x 378 mm	78 mm	1540 ml	40 - 160 ml/min
				1600	117 x 426 mm	104 mm	3100 ml	70 - 280 ml/min



Ventajas de Uso de un menor tamaño de Partícula

- Mayor Eficacia
- Menor Volumen de Recolección
- Mayor Capacidad de Carga

Purificación de Ftalatos en Columna SiO₂ de 25 g
 (125 mg Dimetil Ftalato + 125 mg Dietil Ftalato)
 en 1 ml inyección
 Ciclohexano – Acetato de Etilo (85% - 15 %)
 Caudal : 30 ml/min
 UV : 254nm

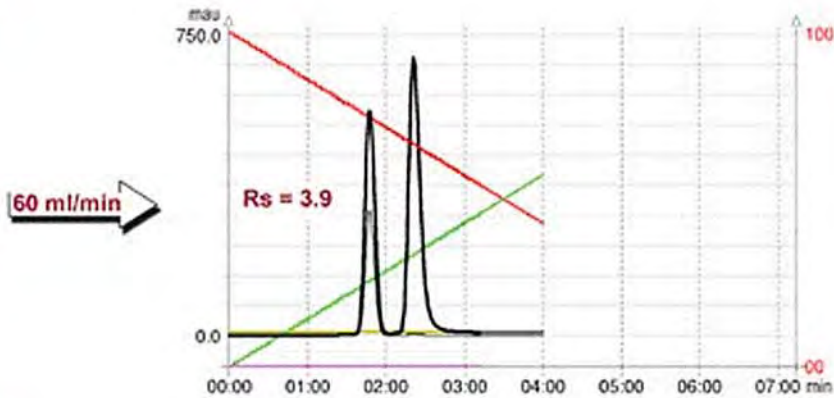
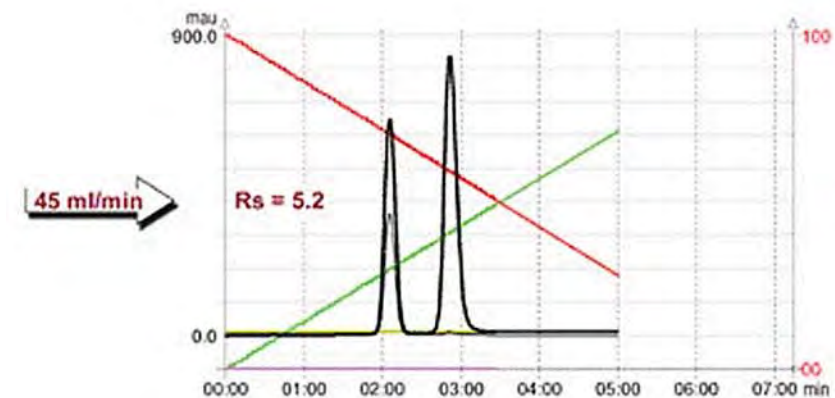
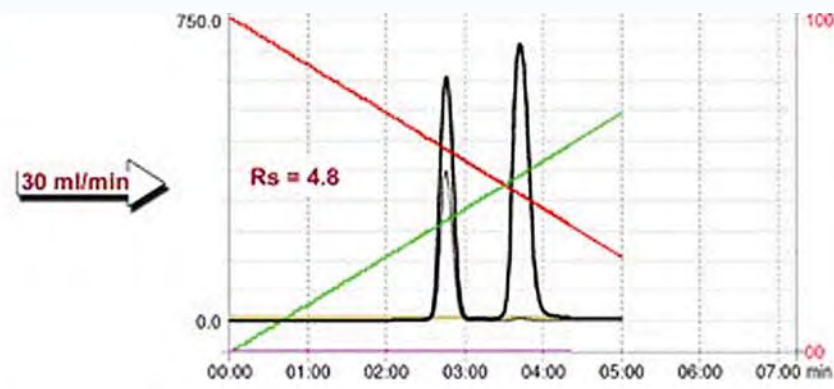
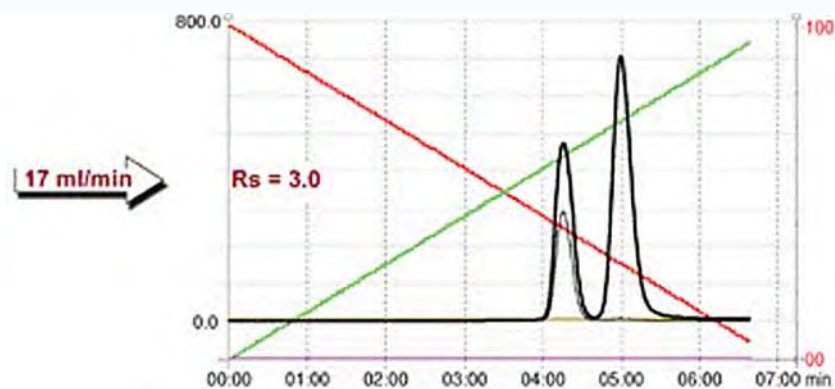




Impacto de Caudal en la Resolución

Elución por Gradiente:

A) Hexano B) Acetato de Etilo
0 - 100% B en 7 minutos
Columna 12 g a 17, 30, 45, 60 ml/min
Metoxiacetofenona, Metil paraben





Consiga Mayor Productividad @ Mayor Caudal con Partículas más Pequeñas

Purificación de Ftalatos en Columna SiO₂ de 25 g

(125 mg Dimetil Ftalato + 125 mg Dietil Ftalato)

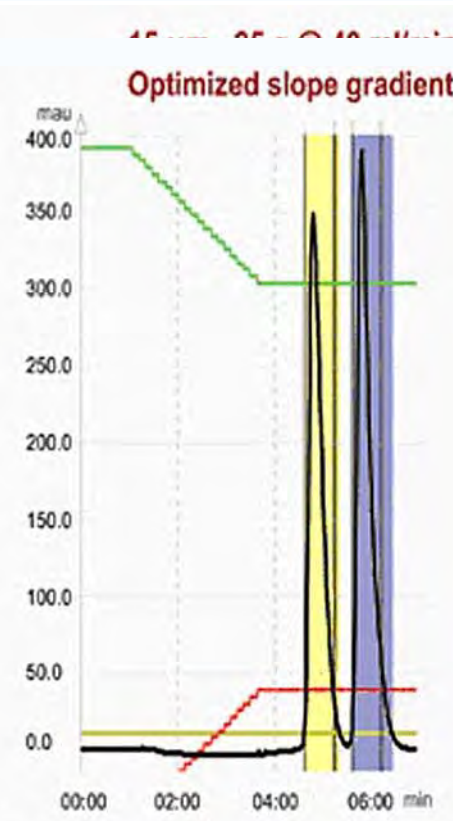
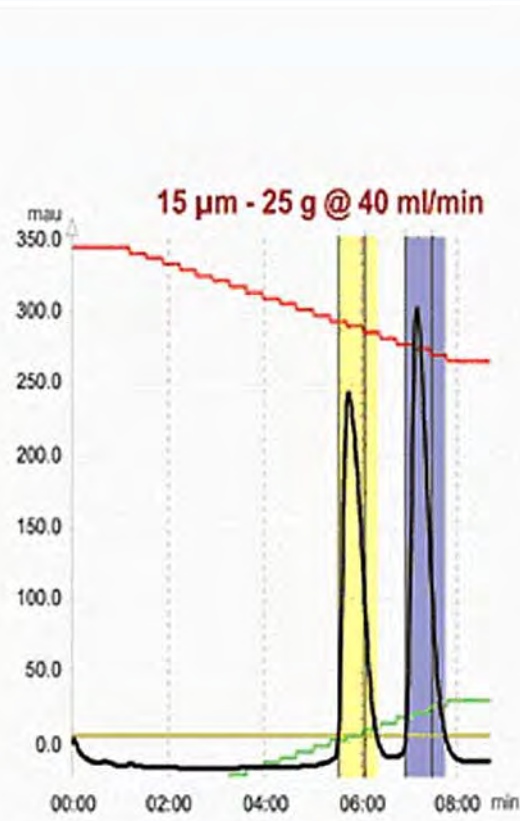
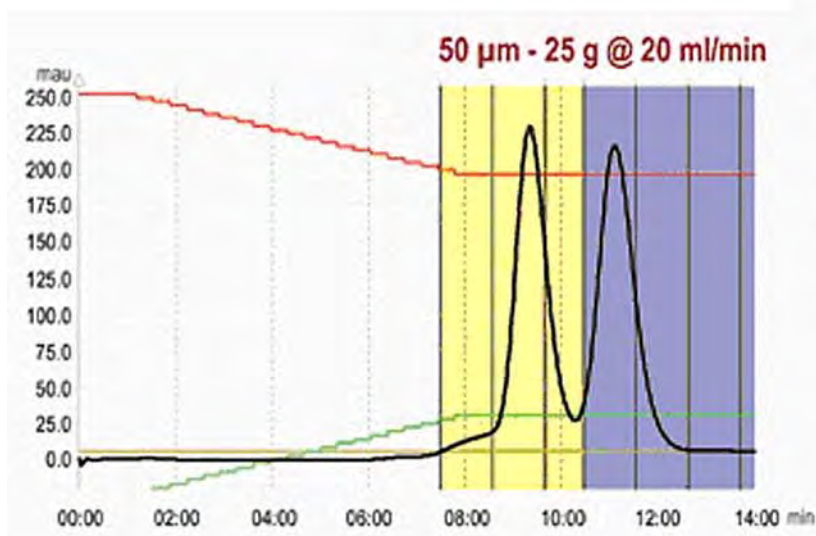
en 1 ml inyección

Gradiente Ciclohexano – Acetato de Etilo

100 % CH : 1 min

80 % CH : 7 min

80 % CH : 13 min





Guía para Seleccionar Columnas de SiO2

Condiciones Analíticas :

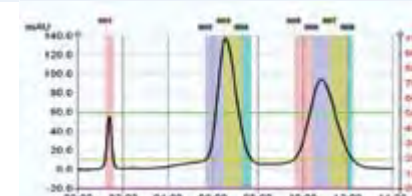
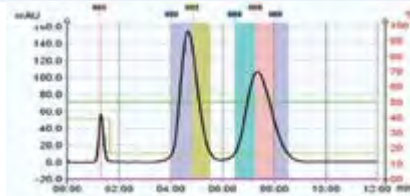
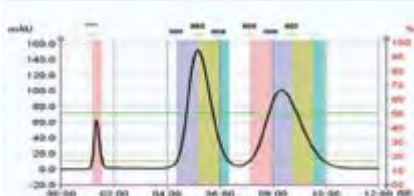
Eluente : ciclohexano / acetato de etilo 90/10 - Caudal : 40 ml/min

Tipo Std -
SiO2 Irregula3 40/63 µm Columna 40 g

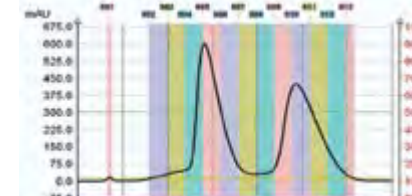
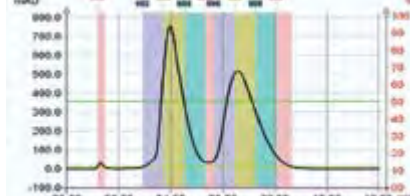
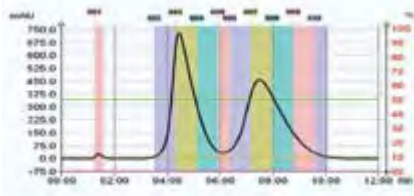
Tipo HP -
SiO2 HP 50 µm Columna 40 g

Tipo HC -
SiO2 Alta Carga 50 µm Columna 40 g

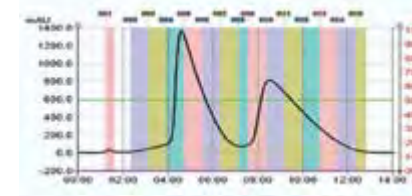
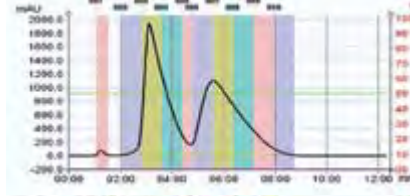
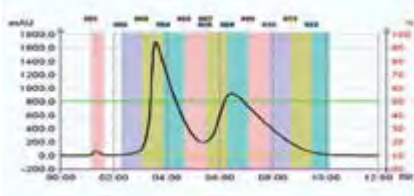
Carga 0
5 ml de A



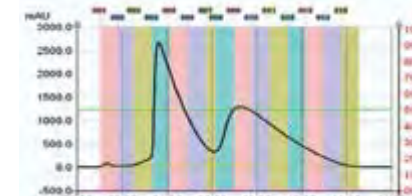
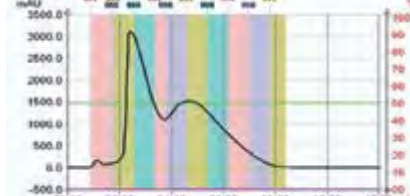
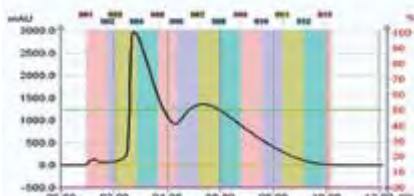
Carga 1
2 ml de C



Carga 2
5 ml de C



Carga 3
10 ml de C

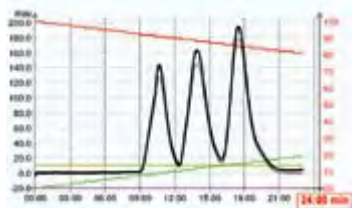


Disolución A	Peso g	Vol. mL	Solvente
Tri-t-Butil Benceno	3	100	Ciclohexano/ Acetato de Etilo
Dietil Ftalato	3	100	90/10
Dimetil Ftalato	3	100	

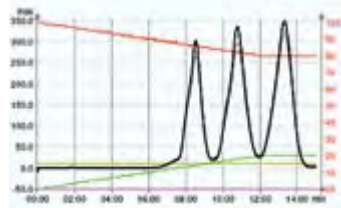
Disolución B	Peso g	Vol. mL	Solvente
Tri-t-Butil Benceno	2	100	Ciclohexano/ Acetato de Etilo
Dietil Ftalato	40	100	90/10
Dimetil Ftalato	40	100	



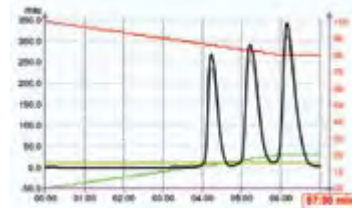
Mayor Pureza, en 7 minutos o 24 minutos – ¿De cuánto tiempo dispone?



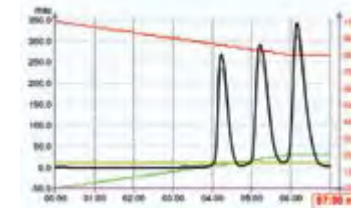
50 µm puriflash Silica Std, 25 g
P/N : IR-50SI/25G
Caudal : 20 ml/min
Presión : 0 bar
Solventes : A : Hexano - B : Acetato Etilo
Gradiente CV : 0.0 - 9.6 CV, O - 20% B
Muestra : 2 ml, 500 mg/ml, 4% Carga



50 µm puriflash Silica HP, 25 g
P/N : IR-50SIHP/25G
Caudal : 20 ml/min
Presión : 0 bar
Solventes : A : Hexano - B : Acetato Etilo
Gradiente CV : 0.0 - 4.8 CV, O - 20% B ; 4.8 - 5.6 CV, 20% B
Gradiente T : 0:00 - 12:00, 0 - 20% B ; 12:00 - 15:00, 20% B
Muestra : 2 ml, 500 mg/ml, 4% Carga

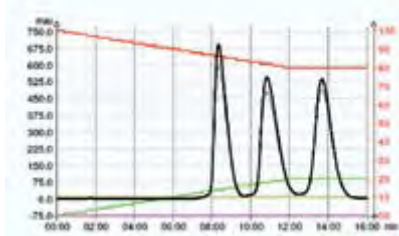


30 µm puriflash Silica HP, 25 g
P/N : PF-30SIHP/25g
Caudal : 30 ml/min
Presión : 1 bar
Solventes : A : Hexano - B : Acetato Etilo
Gradiente CV : 0.0 - 4.8 CV, O - 20% B ; 4.8 - 5.6 CV, 20% B
Gradiente T : 0:00 - 8:00, 0 - 20% B ; 8:00 - 10:00, 20% B
Muestra : 2 ml, 500 mg/ml, 4% Carga

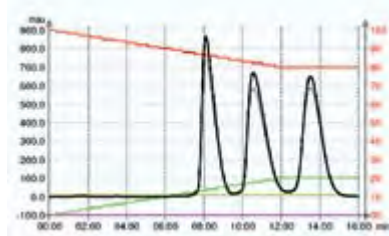


15 µm puriflash Silica HP, 25 g
P/N : PF-15SIHP/25G
Caudal : 40 ml/min
Presión : 2 bars
Solventes : A : Hexano - B : Acetato Etilo
Gradiente CV : 0.0 - 4.8 CV, O - 20% B ; 4.8 - 5.6 CV, 20% B
Gradiente T : 0:00 - 6:00, 0 - 20% B ; 6:00 - 7:00, 20% B
Muestra : 2 ml, 500 mg/ml, 4% Carga

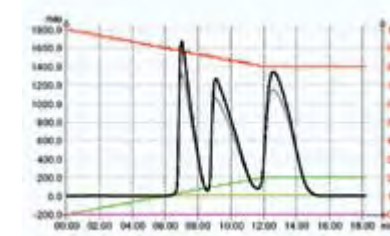
Mayor Capacidad - 20 % carga, ¡5 g de muestra en una columna de 25 g!



50 µm puriflash Silica HC, 25 g
P/N : IR-50SIHC/25G
Caudal : 20 ml/min
Presión : 0 bar
Solventes : A : Hexano - B : Acetato Etilo
Gradiente CV : 0.0 - 4.8 CV, O - 20% B ; 4.8 - 6.4 CV, 20% B
Gradiente T : 0:00 - 12:00, 0 - 20% B ; 12:00 - 16:00, 20% B
Muestra : 5 ml, 500 mg/ml, 2.5 g, 10% Carga



50 µm puriflash Silica HP, 25 g
P/N : IR-50SIHP/25G
Caudal : 20 ml/min
Presión : 0 bar
Solventes : A : Hexano - B : Acetato Etilo
Gradiente CV : 0.0 - 4.8 CV, O - 20% B ; 4.8 - 6.6 CV, 20% B
Gradiente T : 0:00 - 12:00, 0 - 20% B ; 12:00 - 16:00, 20% B
Muestra : 7 ml, 500 mg/ml, 3.5 g, 14% Carga



50 µm puriflash Silica HC, 25 g
P/N : PF-50SIHC/25g
Caudal : 20 ml/min
Presión : 0 bar
Solventes : A : Hexano - B : Acetato Etilo
Gradiente CV : 0.0 - 4.8 CV, O - 20% B ; 4.8 - 6.4 CV, 20% B
Gradiente T : 0:00 - 12:00, 0 - 20% B ; 12:00 - 16:00, 20% B
Muestra : 10 ml, 500 mg/ml, 5.0 g, 20% Carga



Silica Alta Prestación 15 µm		
PF-15SIHP/4G	4 g	20 u
PF-15SIHP/12G	12 g	20 u
PF-15SIHP/25G	25 g	12 u
PF-15SIHP/40G	40 g	12 u
PF-15SIHP/80G	80 g	4 u
PF-15SIHP/120G	120 g	4 u
PF-15SIHP/200G	200 g	2 u
PF-15SIHP/300G	300 g	2 u
PF-15SIHP/800G	800 g	1 u
PF-15SIHP/1 600G	1 600 g	1 u
Silica Alta Prestación 30 µm		
PF-30SIHP/4G	4 g	40 u
PF-30SIHP/12G	12 g	30 u
PF-30SIHP/25G	25 g	25 u
PF-30SIHP/40G	40 g	20 u
PF-30SIHP/80G	80 g	10 u
PF-30SIHP/120G	120 g	8 u
PF-30SIHP/200G	200 g	4 u
PF-30SIHP/300G	300 g	4 u
PF-30SIHP/800G	800 g	1 u
PF-30SIHP/1600G	1 600 g	1 u
Silica Alta Prestación 30 µm		
PF-50SIHP/4G	4 g	40 u
PF-50SIHP/12G	12 g	30 u
PF-50SIHP/25G	25 g	25 u
PF-50SIHP/40G	40 g	20 u
PF-50SIHP/80G	80 g	10 u
PF-50SIHP/120G	120 g	8 u
PF-50SIHP/200G	200 g	4 u
PF-50SIHP/300G	300 g	4 u
PF-50SIHP/800G	800 g	1 u
PF-50SIHP/1600G	1 600 g	1 u
Silica Alta Capacidad 50 µm		
PF-50SIHP/4G	4 g	40 u
PF-50SIHP/12G	12 g	30 u
PF-50SIHP/25G	25 g	25 u
PF-50SIHP/40G	40 g	20 u
PF-50SIHP/80G	80 g	10 u
PF-50SIHP/120G	120 g	8 u
PF-50SIHP/200G	200 g	4 u
PF-50SIHP/300G	300 g	4 u
PF-50SIHP/800G	800 g	1 u
PF-50SIHP/1600G	1 600 g	1 u

Silica Standard 50 µm		
IR-50SI/4G	4 g	40 u
IR-50SI/12G	12 g	30 u
IR-50SI/25G	25 g	25 u
IR-50SI/40G	40 g	20 u
IR-50SI/80G	80 g	10 u
IR-50SI/120G	120 g	8 u
IR-50SI/200G	200 g	4 u
IR-50SI/300G	300 g	4 u
IR-50SI/800G	800 g	1 u
IR-50SI/1 600G	1 600 g	1 u
Silica Alta Prestación 15 µm C18		
PF-15C18/6G	6 g	4 u
PF-15C18/20G	20 g	2 u
PF-15C18/35G	35 g	1 u
PF-15C18/55G	55 g	1 u
PF-15C18/120G	120 g	1 u
PF-15C18/175G	175 g	1 u
PF-15C18/300G	300 g	1 u
PF-15C18/450G	450 g	1 u
PF-15C18/1 250G	1 250 g	1 u
PF-15C18/2 500G	2 500 g	1 u
Silica Performance 30 µm C18		
PF-30C18/6G	6 g	4 u
PF-30C18/20G	20 g	2 u
PF-30C18/35G	35 g	1 u
PF-30C18/40G	55 g	1 u
PF-30C18/80G	120 g	1 u
PF-30C18/120G	175 g	1 u
PF-30C18/200G	300 g	1 u
PF-30C18/300G	450 g	1 u
PF-30C18/800G	1 250 g	1 u
PF-30C18/1600G	2 500 g	1 u
Silica Alta Prestación 50 µm C18		
PF-50C18/6G	6 g	4 u
PF-50C18/20G	20 g	2 u
PF-50C18/35G	35 g	1 u
PF-50C18/55G	55 g	1 u
PF-50C18/120G	120 g	1 u
PF-50C18/175G	175 g	1 u
PF-50C18/300G	300 g	1 u
PF-50C18/450G	450 g	1 u
PF-50C18/1250G	1 250 g	1 u
PF-50C18/2500G	2 500 g	1 u



Silica Estándar 50 µm C18		
IR-50C18/6G	6 g	4 u
IR-50C18/20G	20 g	2 u
IR-50C18/35G	35 g	1 u
IR-50C18/55G	55 g	1 u
IR-50C18/120G	120 g	1 u
IR-50C18/175G	175 g	1 u
IR-50C18/300G	300 g	1 u
IR-50C18/450G	450 g	1 u
IR-50C18/1250G	1 250 g	1 u
IR-50C18/2500G	2 500 g	1 u
Silica Alta Prestación 30 µm NH2		
PF-30NH2/6G	6 g	4 u
PF-30NH2/20G	20 g	2 u
PF-30NH2/35G	35 g	1 u
PF-30NH2/55G	55 g	1 u
PF-30NH2/120G	120 g	1 u
PF-30NH2/175G	175 g	1 u
PF-30NH2/300G	300 g	1 u
PF-30NH2/450G	450 g	1 u
PF-30NH2/1250G	1 250 g	1 u
PF-30NH2/2500G	2 500 g	1 u
Silica Alta Prestación 50 µm NH2		
PF-50NH2/6G	6 g	4 u
PF-50NH2/20G	20 g	2 u
PF-50NH2/35G	35 g	1 u
PF-50NH2/55G	55 g	1 u
PF-50NH2/120G	120 g	1 u
PF-50NH2/175G	175 g	1 u
PF-50NH2/300G	300 g	1 u
PF-50NH2/450G	450 g	1 u
PF-50NH2/1250G	1 250 g	1 u
PF-50NH2/2500G	2 500 g	1 u
Silica 50 µm MM1		
PF-50MM1/6G	6 g	4 u
PF-50NH2/20G	20 g	2 u
PF-50NH2/35G	35 g	1 u
PF-50NH2/55G	55 g	1 u
PF-50NH2/120G	120 g	1 u
PF-50NH2/175G	175 g	1 u
PF-50NH2/300G	300 g	1 u
PF-50NH2/450G	450 g	1 u
PF-50NH2/1250G	1 250 g	1 u
PF-50NH2/2500G	2 500 g	1 u

Silica 50 µm SCX		
PF-50SCX/6G	6 g	4 u
PF-50SCX/20G	20 g	2 u
PF-50SCX/35G	35 g	1 u
PF-50SCX/55G	55 g	1 u
PF-50SCX/120G	120 g	1 u
PF-50SCX/175G	175 g	1 u
PF-50SCX/300G	300 g	1 u
PF-50SCX/450G	450 g	1 u
PF-50SCX/1250G	1 250 g	1 u
PF-50SCX/2500G	2 500 g	1 u
Silica 100 µm Poliamina P6		
PF-100P6/2G	2 g	4 u
PF-100P6/8G	8 g	2 u
PF-100P6/12G	12 g	2 u
PF-100P6/20G	20 g	2 u
PF-100P6/45G	45 g	1 u
PF-100P6/65G	65 g	1 u
PF-100P6/115G	115 g	1 u
PF-100P6/175G	175 g	1 u
PF-100P6/465G	465 g	1 u
PF-100P6/940G	940 g	1 u
Alúmina Neutra		
PF-ALN/7G	7 g	8 u
PF-ALN/25G	25 g	4 u
PF-ALN/40G	40 g	4 u
PF-ALN/65G	65 g	4 u
PF-ALN/135G	135 g	2 u
PF-ALN/200G	200 g	2 u
PF-ALN/355G	355 g	2 u
PF-ALN/550G	550 g	1 u
PF-ALN/1445G	1 445 g	1 u
PF-ALN/2900G	2 900 g	1 u
Alúmina Básica		
PF-ALB/7G	7 g	8 u
PF-ALB/25G	25 g	4 u
PF-ALB/40G	40 g	4 u
PF-ALB/65G	65 g	4 u
PF-ALB/1350G	135 g	2 u
PF-ALB/200G	200 g	2 u
PF-ALB/355G	355 g	2 u
PF-ALB/550G	550 g	1 u
PF-ALB/1445G	1 445 g	1 u
PF-ALB/2900G	2 900 g	1 u



Silica 15 µm Péptidos C18T		
PT-15C18T/6G	6 g	2 u
PT-15C18T/20G	20 g	1 u
PT-15C18T/35G	35 g	1 u
PT-15C18T/55G	55 g	1 u
PT-15C18T/120G	120 g	1 u
PT-15C18T/175G	175 g	1 u
PT-15C18T/300G	300 g	1 u
PT-15C18T/450G	450 g	1 u
PT-15C18T/1250G	1 250 g	1 u
PT-15C18T/2500G	2 500 g	1 u
Silica 30 µm Péptidos C18T		
PT-30C18T/6G	6 g	2 u
PT-30C18T/20G	20 g	1 u
PT-30C18T/35G	35 g	1 u
PT-30C18T/55G	55 g	1 u
PT-30C18T/120G	120 g	1 u
PT-30C18T/175G	175 g	1 u
PT-30C18T/300G	300 g	1 u
PT-30C18T/450G	450 g	1 u
PT-30C18T/1250G	1 250 g	1 u
PT-30C18T/2500G	2 500 g	1 u
Silica 15 µm Péptidos C8		
PT-15C8/6G	6 g	2 u
PT-15C8/20G	20 g	2 u
PT-15C8/35G	35 g	1 u
PT-15C8/55G	55 g	1 u
PT-15C8/120G	120 g	1 u
PT-15C8/175G	175 g	1 u
PT-15C8/300G	300 g	1 u
PT-15C8/450G	450 g	1 u
PT-15C8/1250G	1 250 g	1 u
PT-15C8/2500G	2 500 g	1 u
Silica 30 µm Péptidos C8		
PT-30C8/6G	6 g	2 u
PT-30C8/20G	20 g	1 u
PT-30C8/35G	35 g	1 u
PT-30C8/55G	55 g	1 u
PT-30C8/120G	120 g	1 u
PT-30C8/175G	175 g	1 u
PT-30C8/300G	300 g	1 u
PT-30C8/450G	450 g	1 u
PT-30C8/1250G	1 250 g	1 u
PT-30C8/2500G	2 500 g	1 u

Silica 15 µm Péptidos C4		
PT-15C4/6G	6 g	2 u
PT-15C4/20G	20 g	1 u
PT-15C4/35G	35 g	1 u
PT-15C4/55G	55 g	1 u
PT-15C4/120G	120 g	1 u
PT-15C4/175G	175 g	1 u
PT-15C4/300G	300 g	1 u
PT-15C4/450G	450 g	1 u
PT-15C4/1250G	1 250 g	1 u
PT-15C4/2500G	2 500 g	1 u
Silica 30 µm Péptidos C4		
PT-30C4/6G	2 g	2 u
PT-30C4/20G	8 g	1 u
PT-30C4/35G	12 g	1 u
PT-30C4/55G	20 g	1 u
PT-30C4/120G	45 g	1 u
PT-30C4/175G	65 g	1 u
PT-30C4/300G	115 g	1 u
PT-30C4/450G	175 g	1 u
PT-30C4/1250G	465 g	1 u
PT-30C4/2500G	940 g	1 u
Silica 15 µm Proteínas C18T		
PT-15C18T/6G	6 g	2 u
PT-15C18T/20G	20 g	1 u
PT-15C18T/35G	35 g	1 u
PT-15C18T/55G	55 g	1 u
PT-15C18T/120G	120 g	1 u
PT-15C18T/175G	175 g	1 u
PT-15C18T/300G	300 g	1 u
PT-15C18T/450G	450 g	1 u
PT-15C18T/1250G	1 250 g	1 u
PT-15C18T/2500G	2 500 g	1 u
Silica 30 µm Proteínas C18T		
PP-30C18T/6G	6 g	2 u
PP-30C18T/20G	20 g	1 u
PP-30C18T/35G	35 g	1 u
PP-30C18T/55G	55 g	1 u
PP-30C18T/120G	120 g	1 u
PP-30C18T/175G	175 g	1 u
PP-30C18T/300G	300 g	1 u
PP-30C18T/450G	450 g	1 u
PP-30C18T/1250G	1 250 g	1 u
PP-30C18T/2500G	2 500 g	1 u



Silica 15 µm Proteínas C8		
PP-15C8/6G	6 g	2 u
PP-15C8/20G	20 g	1 u
PP-15C8/35G	35 g	1 u
PP-15C8/55G	55 g	1 u
PT-15C18T/120G	120 g	1 u
PT-15C18T/175G	175 g	1 u
PT-15C18T/300G	300 g	1 u
PT-15C18T/450G	450 g	1 u
PT-15C18T/1250G	1 250 g	1 u
PT-15C18T/2500G	2 500 g	1 u
Silica 30 µm Proteínas C8		
PT-30C8/6G	6 g	2 u
PT-30C8/20G	20 g	1 u
PT-30C8/35G	35 g	1 u
PT-30C8/55G	55 g	1 u
PT-30C8/120G	120 g	1 u
PT-30C8/175G	175 g	1 u
PT-30C8/300G	300 g	1 u
PT-30C8/450G	450 g	1 u
PT-30C8/1250G	1 250 g	1 u
PT-30C8/2500G	2 500 g	1 u
Silica 15 µm Proteínas C4		
PP-15C4/6G	6 g	2 u
PP-15C4/20G	20 g	1 u
PP-15C4/35G	35 g	1 u
PP-15C4/55G	55 g	1 u
PP-15C4/120G	120 g	1 u
PP-15C4/175G	175 g	1 u
PP-15C4/300G	300 g	1 u
PP-15C4/450G	450 g	1 u
PP-15C4/1250G	1 250 g	1 u
PP-15C4/2500G	2 500 g	1 u
Silica 30 µm Proteínas C4		
PP-30C4/6G	6 g	2 u
PP-30C4/20G	20 g	1 u
PP-30C4/35G	35 g	1 u
PP-30C4/55G	55 g	1 u
PP-30C4/120G	120 g	1 u
PP-30C4/175G	175 g	1 u
PP-30C4/300G	300 g	1 u
PP-30C4/450G	450 g	1 u
PP-30C4/1250G	1 250 g	1 u
PP-30C4/2500G	2 500 g	1 u

Cellufine 90 µm A500		
CF-90A500/7ML	7 ml	2 u
CF-90A500/27ML	27 ml	1 u
CF-90A500/45ML	45 ml	1 u
CF-90A500/68ML	68ml	1 u
CF-90A500/145ML	145 ml	1 u
CF-90A500/215ML	215 ml	1 u
CF-90A500/375ML	375 ml	1 u
CF-90A500/575ML	575ml	1 u
CF-90A500/1540ML	1 540 ml	1 u
CF-90A500/3100ML	3 100 ml	1 u
Cellufine 90 µm Q500		
CF-90Q500/7ML	7 ml	2 u
CF-90Q500/27ML	27 ml	1 u
CF-90Q500/45ML	45 ml	1 u
CF-90Q500/68ML	68 ml	1 u
CF-90Q500/145ML	145 ml	1 u
CF-90Q500/215ML	215 ml	1 u
CF-90Q500/375ML	375 ml	1 u
CF-90Q500/575ML	575 ml	1 u
CF-90Q500/1540ML	1 540 ml	1 u
CF-90Q500/3100ML	3 100 ml	1 u
Cellufine 90 µm C500		
CF-90C500/7ML	7 ml	2 u
CF-90C500/27ML	27 ml	1 u
CF-90C500/45ML	45 ml	1 u
CF-90C500/68ML	68 ml	1 u
CF-90C500/145ML	145 ml	1 u
CF-90C500/215ML	215 ml	1 u
CF-90C500/375ML	375 ml	1 u
CF-90C500/575ML	575 ml	1 u
CF-90C500/1540ML	1 540 ml	1 u
CF-90C500/3100ML	3 100 ml	1 u
Cellufine 75 µm Sulfato		
CF-75SO4/7ML	7 ml	1 u
CF-75SO4/27ML	27 ml	1 u
CF-75SO4/45ML	45 ml	1 u
CF-75SO4/68ML	68 ml	1 u
CF-75SO4/145ML	145 ml	1 u
CF-75SO4/215ML	215 ml	1 u
CF-75SO4/375ML	375 ml	1 u
CF-75SO4/575ML	575 ml	1 u
CF-75SO4/1540ML	1 540 ml	1 u
CF-75SO4/3100ML	3 100 ml	1 u

**Cellufine 90 µm Endotoxin Removal L**

CF-90EL/7ML	7 ml	1 u
CF-90EL/27ML	27 ml	1 u
CF-90EL/45ML	45 ml	1 u
CF-90EL/68ML	68ml	1 u
CF-90EL/145ML	145 ml	1 u
CF-90EL/215ML	215 ml	1 u
CF-90EL/375ML	375 ml	1 u
CF-90EL/575ML	575ml	1 u
CF-90EL/1540ML	1 540 ml	1 u
CF-90EL/3100ML	3 100 ml	1 u

Cellufine 75 µm Endotoxin Removal S

CF-75ES/7ML	7 ml	1 u
CF-75ES/27ML	27 ml	1 u
CF-75ES/45ML	45 ml	1 u
CF-75ES/68ML	68 ml	1 u
CF-75ES/145ML	145 ml	1 u
CF-75ES/215ML	215 ml	1 u
CF-75ES/375ML	375 ml	1 u
CF-75ES/575ML	575 ml	1 u
CF-75ES/1540ML	1 540 ml	1 u
CF-75ES/3100ML	3 100 ml	1 u

Cellufine 90 µm Butil

CF-90C4/7ML	7 ml	1 u
CF-90C4/27ML	27 ml	1 u
CF-90C4/45ML	45 ml	1 u
CF-90C4/68ML	68 ml	1 u
CF-90C4/145ML	145 ml	1 u
CF-90C4/215ML	215 ml	1 u
CF-90C4/375ML	375 ml	1 u
CF-90C4/575ML	575 ml	1 u
CF-90C4/1540ML	1 540 ml	1 u
CF-90C4/3100ML	3 100 ml	1 u

Cellufine 90 µm Fenil

CF-90PH/7ML	7 ml	1 u
CF-90PH/27ML	27 ml	1 u
CF-90PH/45ML	45 ml	1 u
CF-90PH/68ML	68 ml	1 u
CF-90PH/145ML	145 ml	1 u
CF-90PH/215ML	215 ml	1 u
CF-90PH/375ML	375 ml	1 u
CF-90PH/575ML	575 ml	1 u
CF-90PH/1540ML	1 540 ml	1 u
CF-90PH/3100ML	3 100 ml	1 u

PuriFlash™ 430evo**Un Sistema**

- Purificación de pequeña a gran escala
- Acepta *cualquier* tipo de columna: 2.5g – 1.6kg

Mayor Productividad

- Trabaja a mayor caudal & presión
- 200ml/min hasta to 30bars/ 435psi
- Auto-inyección hasta en 4 columnas y métodos

Mayor Pureza

- Sílice Esférica Ultra pura de 50µm, 30 & 15µm

Diseño Compacto y Modular**68x48x44 cm**



Cómo Contactar:



Interchim SA
211 avenue JF Kennedy –
BP1140
03100 Montluçon France
Tel. +33 (0)4 70 03 88 55
interchim@interchim.com
www.interchim.com



Cheshire Sciences (UK) Ltd.
Oak Farm Buildings
Chester Road, Aldford, Chester, CH3
6HJ.
Tel. 01244 620486
Fax : 01244 620378
ask@cheshiresciences.com
www.cheshiresciences.com



Interchim Inc - USA
1536 West 25th Street, Suite
452
San Pedro CA 90732
Tel. 800.560.8262
Fax : 310.802.3877
web@interchiminc.com
www.interchiminc.com



Germany & Austria
germany@interchim.com
www.interchim.com



Benelux
belgium@interchim.com
www.interchim.com



CromLab S.L.
Acer 30-32
08034 Barcelona
Tel. +34932233319
Fax : +34932231637
comercial@cromlab.es
www.cromlab.es