

Capecitabine in Human Plasma Using SOLA and Accucore Core Enhanced Technology HPLC Column

Joanna Denbigh, Thermo Fisher Scientific, Runcorn, Cheshire, UK

Abstract

This application note demonstrates a simple and rapid method for the analysis of capecitabine in low volumes of human plasma. Extraction of this analyte was achieved on Thermo Scientific SOLA cartridges and plates. The capecitabine in the extract was quantified by a matrix-standard calibration, with extracts from human plasma spiked with increasing amounts of the analyte. Determination of the capecitabine was performed by HPLC-MS/MS, using a Thermo Scientific Accucore PFP column under gradient mobile phase conditions.

Introduction

SOLA™ cartridges and plates are a revolutionary new Solid Phase Extraction (SPE) product range. This first in class SPE product range introduces next generation, innovative technological advancements, giving unparalleled performance characteristics compared to conventional SPE, phospholipid and protein precipitation products.

This includes:

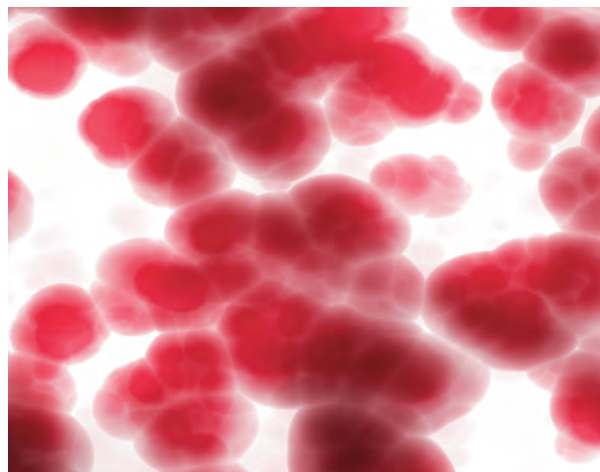
- Higher levels of reproducibility
- Higher levels of extract cleanliness
- Reduced solvent requirements
- Increased sensitivity

SOLA products have significant advantages for the analyst when processing compounds in complex matrices particularly in high throughput bioanalytical and clinical laboratories where reduced failure rate, higher analysis speed and lower sample/solvent requirements are critical.

The increased performance from SOLA products provides higher confidence in analytical results and lowers cost without compromising ease of use or requiring complex method development. Method development was carried out using 10 mg cartridges and the method transferred to 96 well plate format for the validation batch.

Accucore™ HPLC columns use Core Enhanced Technology to facilitate fast and high efficiency separations. The 2.6 µm diameter particles are not totally porous, but rather have a solid core and a porous outer layer. The optimised phase bonding creates a series of high coverage, robust phases. The tightly controlled 2.6 µm diameter of Accucore particles results in much lower backpressures than typically seen with sub-2 µm materials.

Capecitabine is an oral fluoropyrimidine carbamate prodrug of 5-fluorouracil (5-FU) which is one of the most widely used chemotherapeutic agents for the treatment of



patients with breast and colon cancer. Fluorouracil is not suitable for oral administration because of its highly variable gastro-intestinal tract absorption, however capecitabine is rationally designed as an orally administered precursor of 5-deoxy-5-fluorouridine which is sequentially converted to the cytotoxic 5-FU in a series of metabolic steps.

Figure 1 shows the structure of capecitabine.

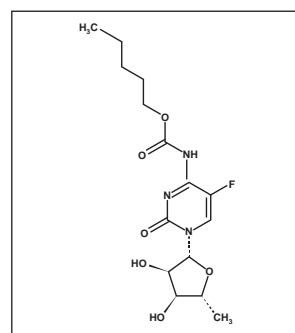


Figure 1. Structure of capecitabine

Experimental Details

Chemicals and Reagents	Part Number
Fisher Scientific LC-MS grade methanol	M/4062/17
Fisher Scientific LC-MS grade water	W/0112/17
Fisher Scientific LC-MS grade acetonitrile	51101
Capecitabine USP Reference standard (USP Reference standard, Rockville, US)	
Capecitabine-D8 Internal Standard (ArtMolecules, Poitiers, France)	

Sample Handling Equipment	Part Number
Liquid handling hardware:	
Thermo Scientific FinnPipette (100-1000 µL)	642090
Thermo Scientific FinnPipette (10-100 µL)	4642070
Thermo Scientific FinnPipette (1-10 µL)	4642040

Key Words

- SOLA Cartridges and Plates
- Accucore
- Capecitabine
- Bioanalytical

Solid Phase Extraction Hardware

96 well Thermo Scientific Positive Pressure Manifold

Part Number

60103-351

Vials and Closures

300 µL fixed insert vial, amber, crimp, chromacol

03-FIV(A)

11 mm aluminium crimp cap, type 7, rubber/PTFE

11-AC7

Sample and calibration preparation

Compounds: Capecitabine (USP Reference standard, Rockville, US)
Capecitabine-D8 (ArtMolecules, Poitiers, France)

Matrix: Human Plasma (Seralab, West Sussex, UK)

Samples: A 1 mg/mL stock solution of capecitabine was prepared in 10:90 methanol:water and subsequently diluted with water to produce a set of spiking solutions. These were used to produce a calibration line in Human plasma covering the range 10 - 1000 ng/mL. Capecitabine-D8 was added as internal standard at a concentration of 500 ng/mL.

The concentration range selected was determined by consideration of the published C_{max} which is reported to be 5405.9 ng/mL⁽¹⁾

Further samples were prepared to allow for calculation of reproducibility, recovery and matrix effect. A mid-range concentration was prepared three times and subjected to the same extraction procedure to determine reproducibility. An extracted blank plasma sample was overspiked at a mid-range concentration and compared with the same concentration of extracted spiked plasma to calculate recovery. Matrix effects were determined by comparing the overspiked blank extract with that of the same concentration of extracted plasma.

Sample Preparation - SOLA**Part Number**

SOLA 10 mg/1 mL cartridges 60109-001

SOLA 10 mg/2 mL 96 well plate 60309-001

Conditioning stage: 0.5 mL methanol

Equilibration stage: 0.5 mL water

Load: 100 µL plasma

Wash: 200 µL water/methanol (80:20)

Elute: 250 µL methanol

Dry under nitrogen

Reconstitute: 100 µL with water

Separation Conditions**Part Number**

Instrumentation: Thermo Scientific Accela 600 pump, Thermo Scientific CTC autosampler

Guard Column: Accucore Defender Guard Column PFP, 17426-012105 and UNIGUARD direct-connection guard cartridge holder 852-00

Column: Accucore PFP 2.6µm, 30 x 2.1 mm 17426-032130

Mobile Phase

A: water

B: acetonitrile

Time (min) % A %B

0.00 100 0

5.00 0 100

5.1 100 0

6.5 100 0

Flow rate: 1.0 mL/min

Column temperature: 40 °C

Injection details: 10 µL partial loop injection

Injection wash solvent: water/methanol (80:20)

Mass Spectrometry Conditions

Instrumentation: Thermo Scientific TSQ Vantage

Ionization conditions	HESI
Polarity	negative
Spray voltage (V)	2500
Vaporizer temp (°C)	350
Sheath gas pressure (Arb)	75
Ion sweep pressure (Arb)	0.5
Aux gas pressure (Arb)	45
Capillary temp (°C)	300
Declustering voltage	0
Collision pressure (mTorr)	1.5
Cycle time (s)	5
Q1 (FWHM)	0.7
Q3 (FWHM)	0.7

Table 1. TSQ Vantage conditions

Compound	Capecitabine	Capecitabine-D8
Parent (m/z)	358.30	366.00
Products (m/z)	154.21	153.75
Collision energy	21	21
S-lens	94	103

Table 2. Compound transition details

Data Processing

Software: Thermo Scientific Xcalibur LCQuan version 2.6

Results

Under the conditions adopted for this analysis, retention of capecitabine and capecitabine-D8 can be achieved in 1.8 minutes. The chromatography is presented in Figure 2.

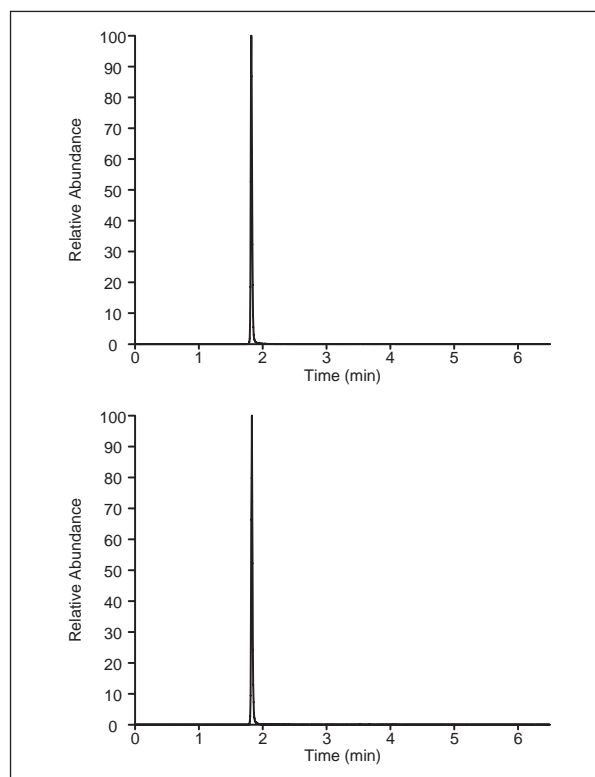


Figure 2: upper trace Capecitabine-D8, lower trace Capecitabine at 500 ng/mL.

The extraction procedure followed used an optimization procedure to obtain the optimum wash and elution conditions for the SPE.

This was achieved by aliquoting 0.5 mL of 100 ng/mL standard mixture (prepared in water) onto SOLA cartridges (following conditioning and equilibration with 0.5 mL of methanol and water respectively). Washes with increasing elutropic strengths of solvent were applied, starting with 0% methanol and increasing sequentially in 10% steps to 100% methanol.

Four elution steps (250 µL of 100 % methanol each) then followed this procedure. Each wash and elution step was collected and analyzed by HPLC. Figure 3 shows the full elution profile for capecitabine. These results show an optimum wash profile of 80:20 water:methanol, before capecitabine started to elute. This was the wash condition adopted throughout this study.

This optimised SPE methodology was transferred onto a SOLA plate for the validation of the methodology.

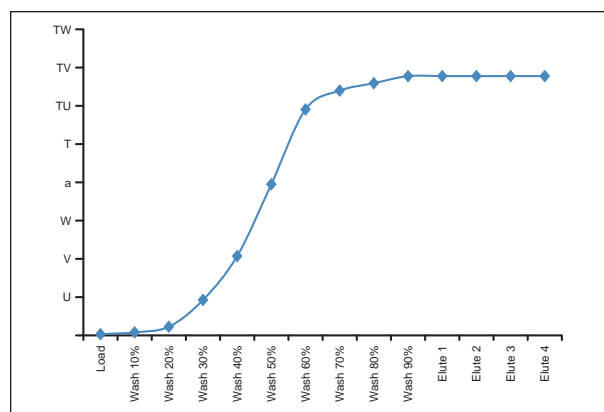


Figure 3. SOLA cartridge elution profile for capecitabine

Linearity

Excellent linearity was observed over a capecitabine concentration range in plasma of 10 ng/mL to 1000 ng/mL with a correlation coefficient value of 0.99. Figure 4 shows the calibration curve plotted for the extracted human plasma.

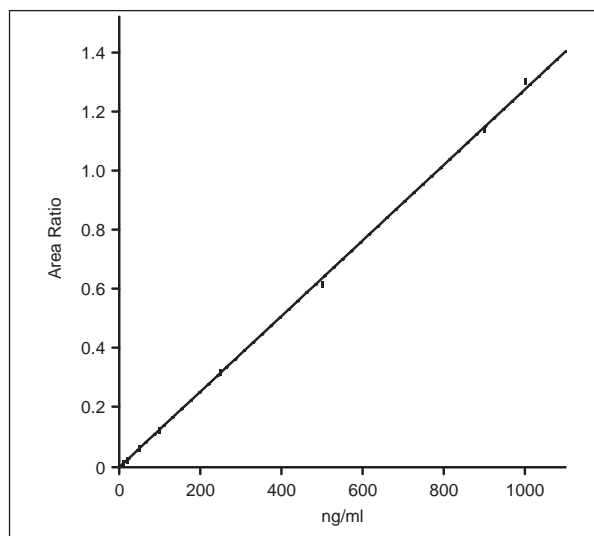


Figure 4. Calibration curve for capecitabine in human plasma

Reproducibility

For the mid range concentration extracted plasma samples, reproducibility was excellent. The calculated %RSD being 2.3% (n=3).

Recovery

Recovery was calculated by comparing the response of the overspiked blank extract with that from an extracted spiked plasma sample. Recovery was calculated to be 73.2%

Conclusion

In this application note SPE-LC-MS/MS methodology for the analysis and quantitation of capecitabine in low volumes of human plasma was developed. Extraction of this analyte was achieved on SOLA well plates using small sample volumes of 100 µL with good recovery and reproducibility.

References

[1]. Farkouh, A, "A Rapid and Simple HPLC Assay for Quantification of Capecitabine for Drug Monitoring Purposes"; *Anticancer Research* (2010), 30, 5207-5212ces

In addition to these offices, Thermo Fisher Scientific maintains a network of representative organizations throughout the world.

**North America
USA and Canada**
+1 800 332 3331

**Europe
France**
+33 (0)1 60 92 48 34

Germany
+49 (0) 2423 9431 -20
or -21

United Kingdom
+44 1928 534110

**Asia
Japan**
+81 3 5826 1615

China
+86-21-68654588
or +86-10-84193588
800-810-5118

India
+91-22-6742 9494

**Thermo Fisher
Scientific Australia
Pty Ltd**
1300 735 292 (free call
domestic)

**Thermo Fisher
Scientific New
Zealand Ltd**
0800 933 966 (free call
domestic)

All Other Enquiries
+44 (0) 1928 534 050

Technical Support

North America
800 332 3331

**Outside North
America**
+44 (0) 1928 534 440

www.thermoscientific.com/chromatography

© 2011 Thermo Fisher Scientific Inc. All rights reserved. All trademarks are the property of Thermo Fisher Scientific Inc. and its subsidiaries. Specifications, terms and pricing are subject to change. Not all products are available in all countries. Please consult your local sales representative for details.

ANCCSOLACBINE 1211