

The LC conditions were as follows:

LC system: UltiMate 3000
Column: PepMap 100, C18, 3 μm , 100 \AA ,
75- μm i.d. x 15 cm (P/N 160321)
Mobile Phase Eluent: A) 100% Water, 0.05% TFA
B) 20:80, Water:MeCN, 0.04% TFA
Gradient: 4–55% B in 30 min, 90% B for
5 min, 25 min equilibration
Flow Rate: 300 nL/min
Oven Temperature: 25 $^{\circ}\text{C}$
Sample: Cytochrome c digest, 1 pmol/ μL
Inj. Volume: 1 μL
Detection: UV, 214 nm, 3-nL flow cell
WPS Temperature: 5 $^{\circ}\text{C}$

RESULTS

A typical separation of a cytochrome c tryptic digest sample under ion-pairing RP conditions is shown in Figure 2.

The chromatogram is characterized by ten main peptide signals separated with high resolution and excellent peak shapes. This separation can be used as a tool to validate the UltiMate 3000 Nano LC system. More complex samples might require longer gradient for complete separation. Using these 75- μm i.d. columns and flow rates of around 300 nL/min, peak elution volumes are typically less than 150 nL. Proper zero dead volume connections are of utmost importance under these conditions.

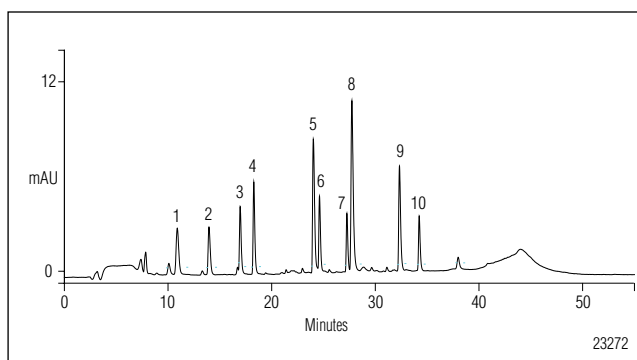


Figure 2. Typical chromatogram for a cytochrome c digest separated on a 75- μm i.d. PepMap 100 nanocolumn.

CONCLUSIONS

The UltiMate 3000 system allows for high-resolution peptide mapping in direct sample injection mode. This method is applicable to low to medium complex samples that do not require desalting and/or preconcentration. The separation of a simple peptide mixture (e.g., a cytochrome c digest) can be used to validate the system.

PepMap and UltiMate are trademarks of Dionex Corporation.

Passion. Power. Productivity.



Dionex Corporation

1228 Titan Way
P.O. Box 3603
Sunnyvale, CA
94088-3603
(408) 737-0700

North America

U.S. (847) 295-7500
Canada (905) 844-9650

South America

Brazil (55) 11 3731 5140

Europe

Austria (43) 1 616 51 25 Belgium (32) 3 353 4294 Denmark (45) 36 36 90 90
France (33) 1 39 30 01 10 Germany (49) 6126 991 0 Italy (39) 02 51 62 1267
The Netherlands (31) 20 683 9768 Switzerland (41) 62 205 9966
U.K. and Ireland (44) 1276 691722

Asia Pacific

Australia (61) 2 9420 5233 China (852) 2428 3282 India (91) 22 28475235
Japan (81) 6 6885 1213 Korea (82) 2 2653 2580 Singapore (65) 6289 1190

www.dionex.com



LPN 1869 PDF 12/06
©2006 Dionex Corporation