

# Separation of Peptides Using a Core Enhanced Technology Accucore HPLC Column

Anila Khan, Thermo Fisher Scientific, Runcorn, Cheshire, UK

## Key Words

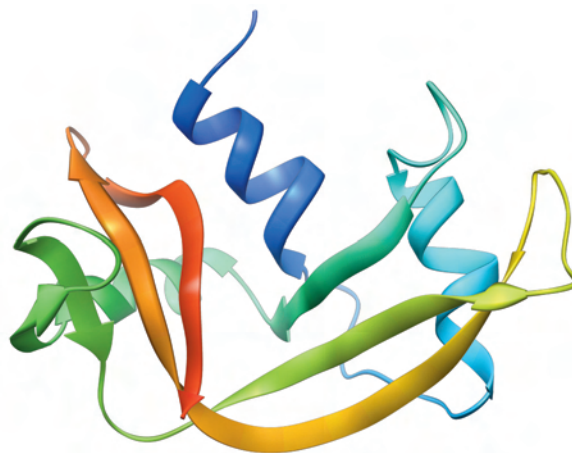
- Accucore C18
- Superficially porous
- Core Enhanced Technology
- Fused core
- Peptides

## Abstract

This application note demonstrates the use of Thermo Scientific Accucore C18 for the separation of peptides with excellent resolution between low and high molecular weight peptides in under four minutes.

## Introduction

Accucore™ C18 columns use Core Enhanced Technology to offer high efficiencies to separate low and high molecular weight peptides. The 2.6 µm diameter particles are not totally porous, but rather have a solid core and a porous outer layer. The optimised phase bonding creates a series of high coverage, robust phases. The carbon loading of Accucore™ C18 provides high retention of non-polar analytes via a predominantly hydrophobic interaction mechanism, enabling the separation of a broad range of analytes. The tightly controlled 2.6 µm diameter of Accucore particles results in much lower backpressures than typically seen with sub-2 µm materials.



## Sample Preparation

A 50 µg/mL peptide standard mixture was prepared in water (refer to Table 1)

Thermo Scientific Column	Part Number
Accucore C18 2.6 µm 100 x 2.1 mm	17126-102130
Measured pressure: 242 bar	

## Thermo Scientific Accela HPLC/UHPLC

Column temperature	40 °C
Injection volume	2 µL
Flow rate	0.50 mL/min
PDA/UV detection	230 nm

## Mobile Phase

A: 0.1% TFA Water

B: 0.1% TFA Far UV Acetonitrile

Gradient:

Time/min	A%	B%
0.01	90	10
6.00	30	70

## Consumables

Consumables	Part Number
Fisher Scientific HPLC grade water	W/0106/17
Fisher Scientific HPLC grade Far UV Acetonitrile	268260025
Trifluoroacetic Acid, Fisher Scientific	T/3258/PB05
NSC Mass Spec Certified 2 mL clear vial with PTFE silicone cap	MSCERT4000-34W

## Results

Figure 1 shows the chromatogram of the peptides with varying molecular weights separated on an Accucore C18 2.6  $\mu\text{m}$  100 x 2.1 mm column in under 3.5 minutes. The analysis demonstrates this column can provide baseline resolution of peptides with a wide range of molecular weights, from Gly-L-Tyr (MW 238) to Ribonuclease (MW 13700).

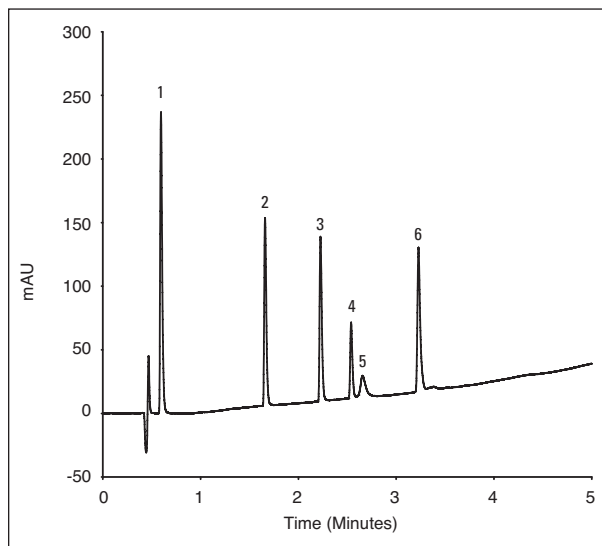


Figure 1: Chromatogram of peptides separated on the Accucore C18 2.6  $\mu\text{m}$  100 x 2.1 mm column

	Compounds	MW	t <sub>r</sub> /min
1	Glycyl-L-Tyrosine	238	0.60
2	Val-Tyr-Val	380	1.66
3	Methionine Enkephalin	574	2.23
4	Leucine Enkephalin	556	2.54
5	Ribonuclease	13700	2.66
6	Insulin	5733	3.23

Table 1: The analysis of peptides on the Accucore C18 2.6  $\mu\text{m}$  100 x 2.1 mm column

## Conclusions

The separation of peptides was successfully achieved on an Accucore C18 column, therefore, providing an excellent choice for the analysis of these peptides, giving an excellent baseline resolution between high and low molecular weight peptides.

*In addition to these offices, Thermo Fisher Scientific maintains a network of representative organizations throughout the world.*

**North America  
USA and Canada**  
+1 800 332 3331

**Europe  
France**  
+33 (0)1 60 92 48 34

**Germany**  
+49 (0) 2423 9431 -20  
or -21

**Switzerland**  
+41 56 618 41 11

**United Kingdom**  
+44 1928 534110

**Asia  
Japan**  
+81 3 5826 1615

**China**  
+86-21-68654588  
or +86-10-84193588  
800-810-5118

**India**  
1800 22 8374 (toll-free)  
+91 22 6716 2200

**Thermo Fisher  
Scientific Australia  
Pty Ltd**  
1300 735 292 (free call  
domestic)

**Thermo Fisher  
Scientific New  
Zealand Ltd**  
0800 933 966 (free call  
domestic)

**All Other Enquiries**  
+44 (0) 1928 534 050

### Technical Support

**North America**  
800 332 3331

**Outside North  
America**  
+44 (0) 1928 534 440

[www.thermoscientific.com/chromatography](http://www.thermoscientific.com/chromatography)

©2011 Thermo Fisher Scientific Inc. All rights reserved. All trademarks are the property of Thermo Fisher Scientific Inc. and its subsidiaries. Specifications, terms and pricing are subject to change. Not all products are available in all countries. Please consult your local sales representative for details.

ANCCSCTPEPTIDE 0611